



SUCO - 0184/0185 PRESSURE SWITCH

IP65

0184457031003
0,3..1,5 bar, G1/4, CO, NBR, DIN

- Up to 250 V
- Connector included (DIN 43650/Form A)
- Five adjustment ranges from 0,3..1,5 bar to 50..200 bar
- Changeover (SPDT)
- Over pressure safety from 100 bar up to 600 bar



PRODUCT DESCRIPTION

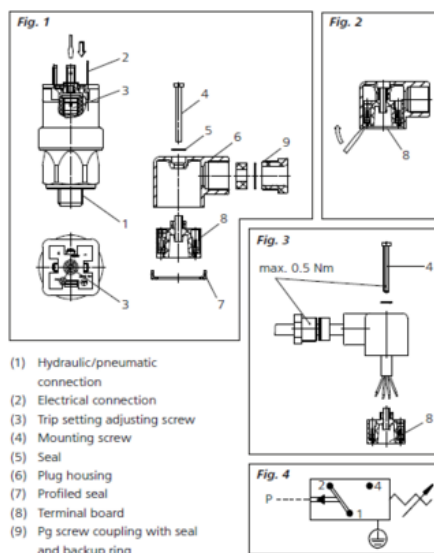
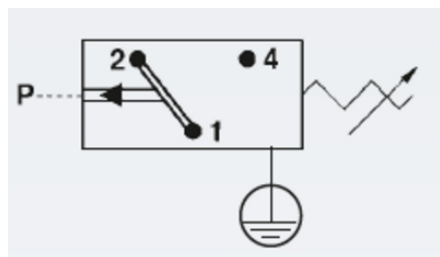
The **Suco 0184/0185 series** are compact, yet robust mechanical pressure switches built into a zinc-plated steel housing (HEX 27 mm), designed for reliable monitoring up to 250 V with silver-contacted SPDT snap-action micro-switches rated for 4 A resistive. The **0184** features a diaphragm design, while the **0185** uses a piston mechanism; both support five field-adjustable pressure ranges and deliver factory-set differentials between 10–30%. They also offer impressive overpressure protection—up to 100 bar (1,450 psi) for diaphragm models and up to 300 bar (4,350 psi) for piston versions. Sealing options include NBR, EPDM, FKM (Viton®), and HNBR, providing compatibility with a broad range of fluids and temperature conditions (e.g., NBR: –30 °C to +100 °C; EPDM/FKM: up to +120 °C).

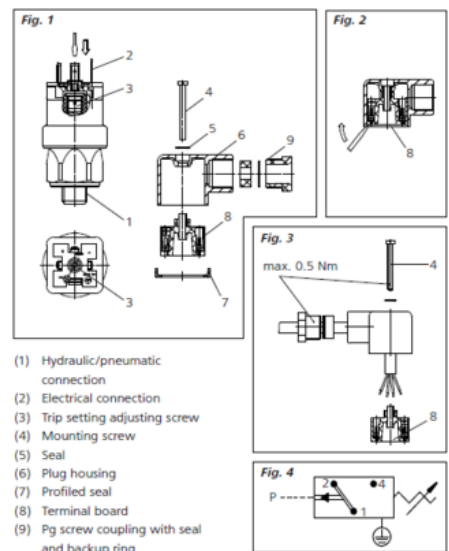
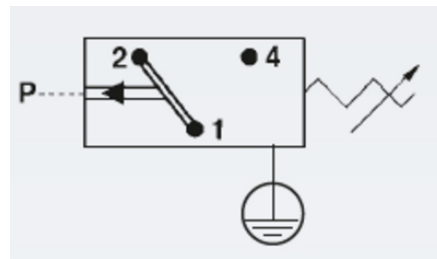
Engineered for harsh environments, the 0184/0185 switches offer IP65 ingress protection (with connector installed), vibration resistance of 10 g (5–200 Hz), and shock endurance of 294 m/s² over 14 ms. Installation is streamlined via the integrated DIN EN 175301-type connector, enabling rapid wiring and straightforward field replacement. These switches are ideal for mobile hydraulic systems, industrial machinery, HVAC controls, water treatment plants, and safety interlock applications where precise pressure thresholds and high durability are essential.

TECHNICAL DATA

Adjustment range max	1.5 bar
Adjustment range min	0.3 bar
Approvals	CSA US, RoHS II
Contact load max ac	4 A
Contact load max dc	0.25 A
Deviation max	±0,2
Electrical connection	DIN EN 175301-803-A
Function	Changeover (SPDT)
IP class	IP65
Material membrane	NBR

Material of body	Galvanized steel
Material of wetted parts	Galvanized steel, NBR
Max switching frequency/min	200
Pressure max	100 bar
Process connection	1/4 BSP
Temperature ambient from	-20 °C
Temperature ambient to	80 °C
Temperature of media from	-30 °C
Temperature of media to	100 °C
Type Pressure Switch	High accuracy
Weight	130 g
Voltage ac/dc max	250 V
Voltage ac/dc min	10 V





- (1) Hydraulic/pneumatic connection
- (2) Electrical connection
- (3) Trip setting adjusting screw
- (4) Mounting screw
- (5) Seal
- (6) Plug housing
- (7) Profiled seal
- (8) Terminal board
- (9) Pg screw coupling with seal and backup ring