

QUARTER-TURN T-HANDLE 18MM STAINLESS STEEL

253550-1245

T-handle Non locking SS Black with cam

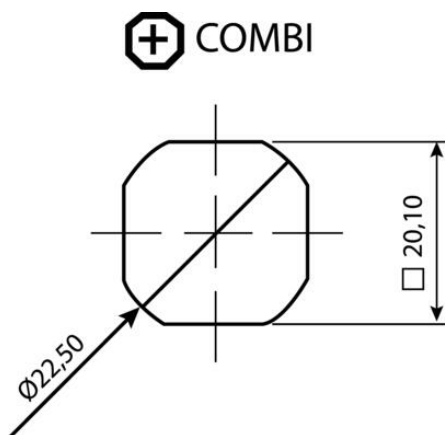
- Stainless/acid resistant
- 18mm lock housing
- Installation on the right or left
- IP65/NEMA 4
- Not configurable



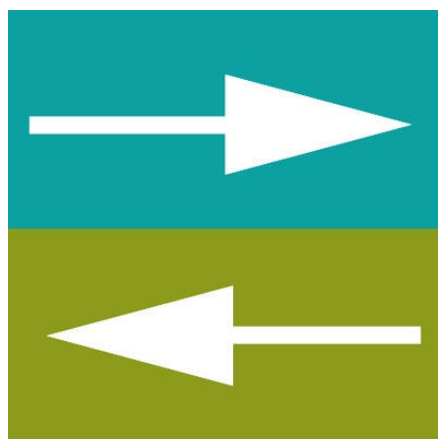
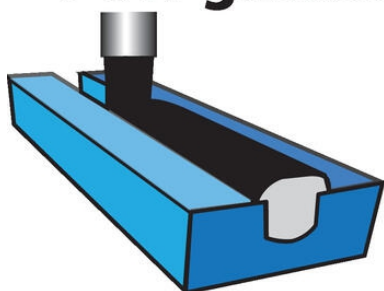
PRODUCT DESCRIPTION

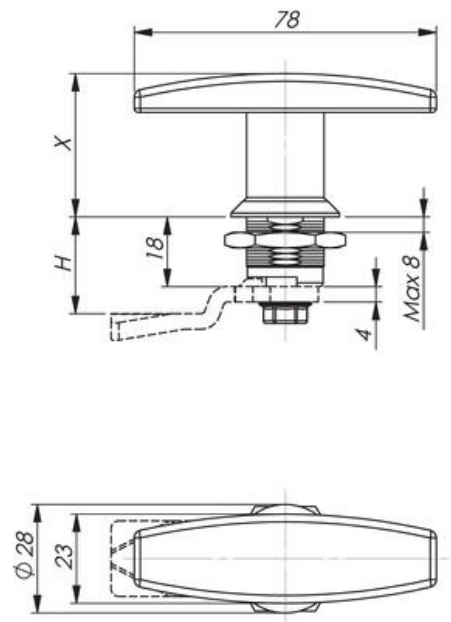
90° T-handle in non-locking version. Universal right or left mounting when opening/closing. Supplied with nut. Protection class IP65/NEMA 4.

Please note that rule is ordered separately. Choose rule with notches, three-point rule or hook rule

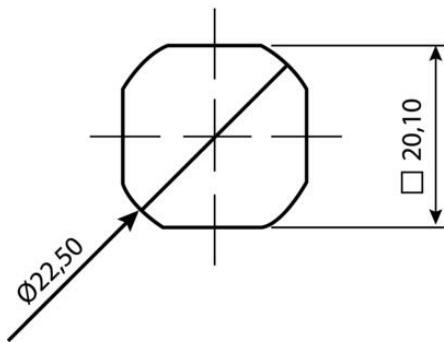


Integrated PUR-gasket





⊕ COMBI



IP65

NEMA
4

Integrated
PUR-gasket

