

## QUARTER-TURN CLASSIC EXTENDED 30MM LOCK

2102-008220-1645

Quarter turn 30mm, zinc chrome, square8/M6, IP54 enclosed cam, 16/45mm



- 30mm lock housing
- IP65
- For insulated doors
- Extended lock housing
- Configurable

### PRODUCT DESCRIPTION

A complete lock consists of lock housing, nut, insert, washer, screw and rule. Protection class IP65 is obtained by placing an O-ring on the insert and a flat gasket on the lock housing.

The lock can be delivered unassembled, pre-assembled with an enclosed rule or in fully assembled condition.

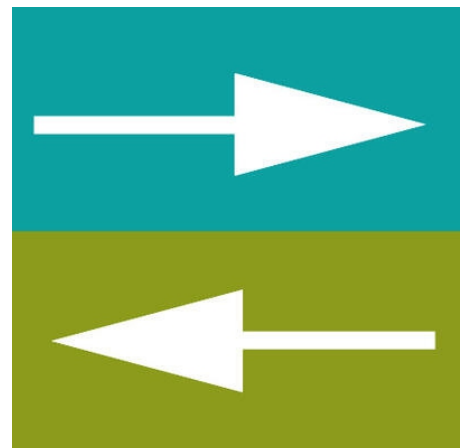
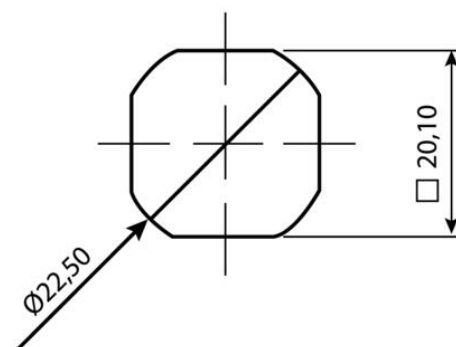
90° lock with extended lock housing for insulated hatches and doors. Lock housing 45.5 mm can be fitted with fork spring for door thickness 29, 32 or 39 mm. Lock housing 56.5 can be fitted with fork spring for door thicknesses 40, 43 and 50 mm. Fork spring is ordered separately (Art. no. 271105).

SM= Standard nut.  
 JM= Ground nut.

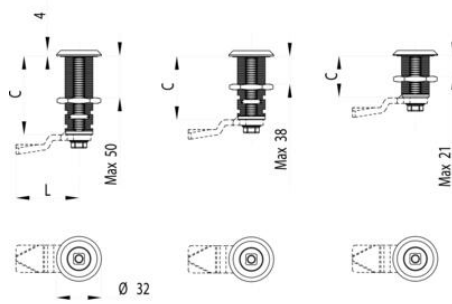
### TECHNICAL DATA

<b>Configurable</b>	Yes
<b>Dimension H</b>	16 mm
<b>Dimension L</b>	45 mm
<b>Material lock housing</b>	Zinc, chrome
<b>Material rule</b>	Steel
<b>Opening angle</b>	90 °

AAAA	Libellé	N	Profil	CC	Boite	D	PRO	Platelage	Z	Regul	GGGG	16 mm	16 mm
2102	2102-008220-1645	1	SM	SM	Profil 8	2	SM	2102-008220-1645	1	SM	-0000	...	...
2102	2102-008220-1645	1	SM	SM	Profil 8 / 16	4	SM	2102-008220-1645	1	SM	-0000	...	...
2102	2102-008220-1645	1	SM	SM	Profil 8	2	SM	2102-008220-1645	1	SM	-0000	...	...
2102	2102-008220-1645	1	SM	SM	Profil 8	2	SM	2102-008220-1645	1	SM	-0000	...	...
2102	2102-008220-1645	1	SM	SM	Profil 8	2	SM	2102-008220-1645	1	SM	-0000	...	...



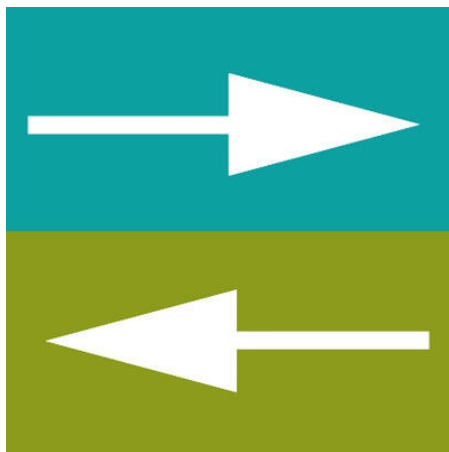
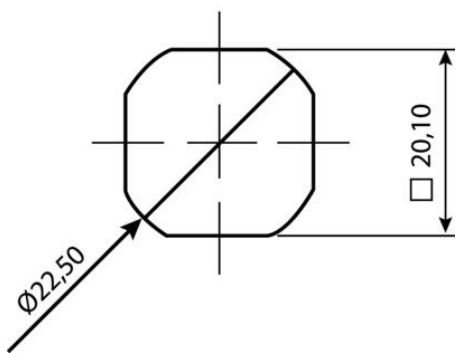
# IP65



MAPPA ART. 481, PER COMPLETTI IP-LEG PER SOLLEVAZIONE CORDONE 35 - 10 mm

AAAA	Alcham	A	Materiali	C	Interno	B	Struttura	E	Finishing	F	Special	Access	Prezzi
0100	Chm. inossidabile C-316.2	1	30	20	Poliamm. 6	2	30mm	1	PPA, inossidabile	2	180	-0000	-
0101	Chm. inossidabile C-316.2	1	20	20	Poliamm. 6	2	30mm	1	PPA, inossidabile	2	180	-0000	-
0102	Chm. inossidabile C-316.2	1	20	20	Poliamm. 6	2	30mm	1	PPA, inossidabile	2	180	-0000	-
0103	Chm. inossidabile C-316.2	1	20	20	Poliamm. 6	2	30mm	1	PPA, inossidabile	2	180	-0000	-
0104	Chm. inossidabile C-316.2	1	20	20	Poliamm. 6	2	30mm	1	PPA, inossidabile	2	180	-0000	-
0105	Chm. inossidabile C-316.2	1	20	20	Poliamm. 6	2	30mm	1	PPA, inossidabile	2	180	-0000	-
0106	Chm. inossidabile C-316.2	1	20	20	Poliamm. 6	2	30mm	1	PPA, inossidabile	2	180	-0000	-
0107	Chm. inossidabile C-316.2	1	20	20	Poliamm. 6	2	30mm	1	PPA, inossidabile	2	180	-0000	-
0108	Chm. inossidabile C-316.2	1	20	20	Poliamm. 6	2	30mm	1	PPA, inossidabile	2	180	-0000	-
0109	Chm. inossidabile C-316.2	1	20	20	Poliamm. 6	2	30mm	1	PPA, inossidabile	2	180	-0000	-
0110	Chm. inossidabile C-316.2	1	20	20	Poliamm. 6	2	30mm	1	PPA, inossidabile	2	180	-0000	-

COMBI



# IP65

