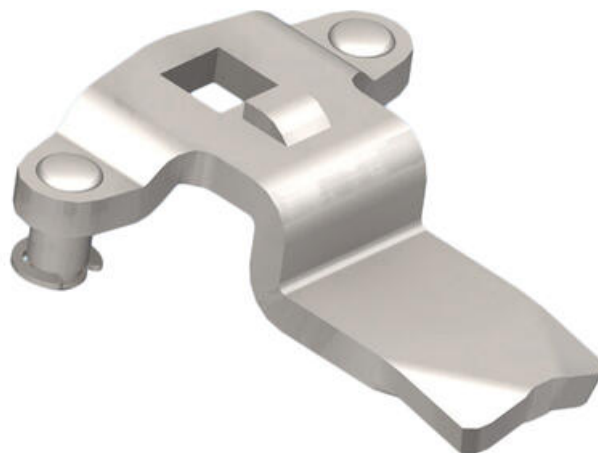


## VISION THREE-POINT CAM

2321S02P

Vision 3-point cam, steel, stroke 20mm, 4mm

- Three point cam
- For turning handles
- Steel/stainless steel
- Wide range of heights and lengths



### PRODUCT DESCRIPTION

Three-point rule with grants. Intended for espagnolette handles. Stroke length: 20 mm. Comes with track rider.

A = Inside door to impact surface on rule.

L = 45mm.

### TECHNICAL DATA

Dimension A	4 mm
Material	Zinc-plated steel

