

## QUARTER-TURN L-HANDLE 18MM PADLOCKABLE STAINLESS STEEL

263064

Quarter-turn L-handle, 18mm, SS 304

- Stainless steel
- 18mm lock housing
- Installation on the right or left



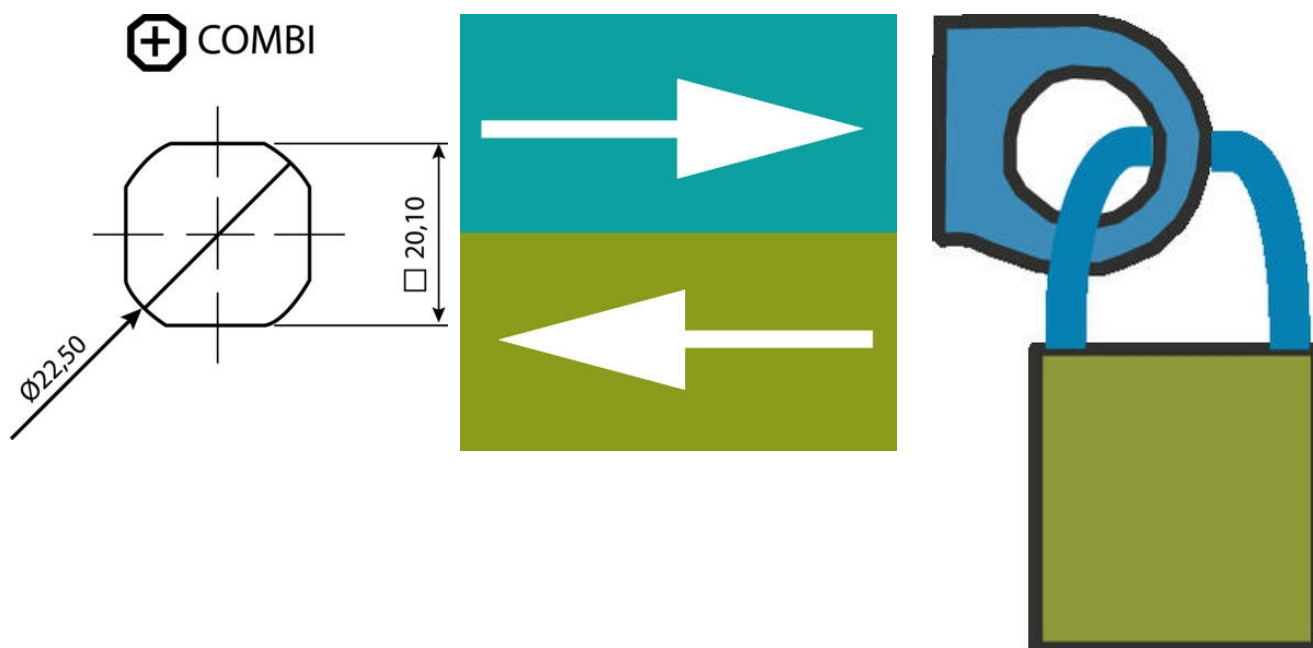
### PRODUCT DESCRIPTION

Stainless handle for locking with a padlock. Made of stainless steel (304). Universal right or left mounting when opening / closing. Suitable for bolts with single or multi-point locking. Supplied with nut. Protection class IP65.

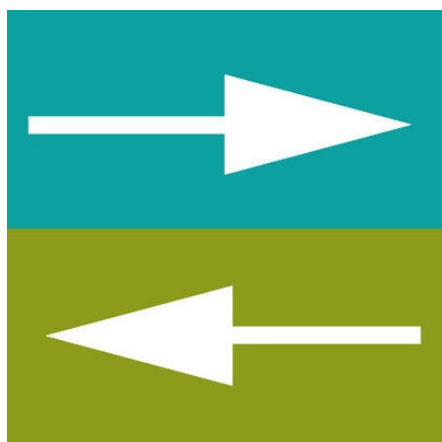
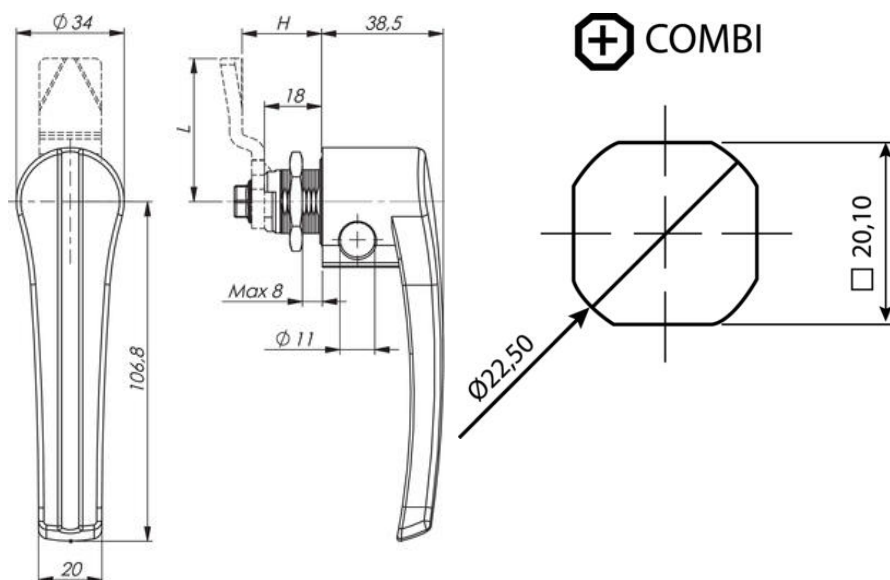
Please note that rule is ordered separately. Choose: rule with notches, three-point rule or hook rule

### TECHNICAL DATA

Configurable	No
Material	Stainless steel AISI 304



IP65



IP65

