

## QUARTER-TURN T-HANDLE 18MM STAINLESS STEEL

259050

T-handle stainless steel 316, 18mm, 37mm handle

- Stainless/acid resistant
- 18mm lock housing
- Installation on the right or left
- IP65/NEMA 4
- Not configurable



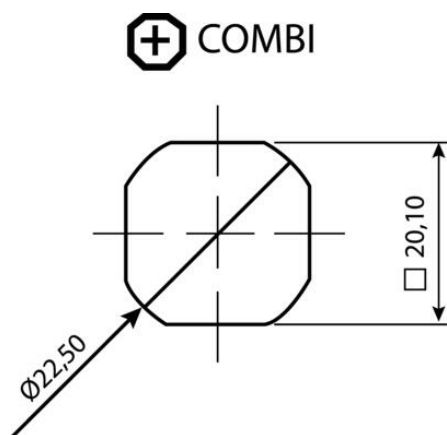
### PRODUCT DESCRIPTION

90° T-handle in non-locking version. Universal right or left mounting when opening/closing. Supplied with nut. Protection class IP65/NEMA 4.

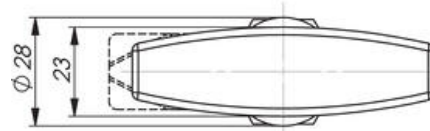
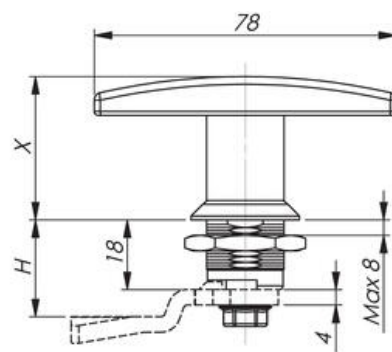
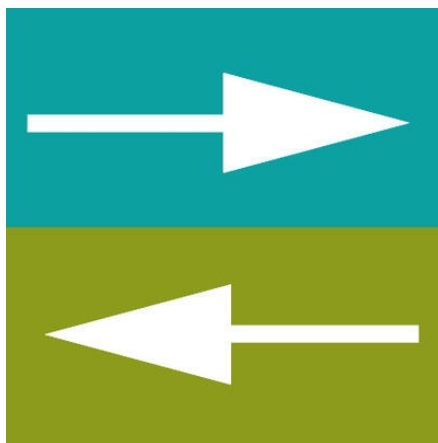
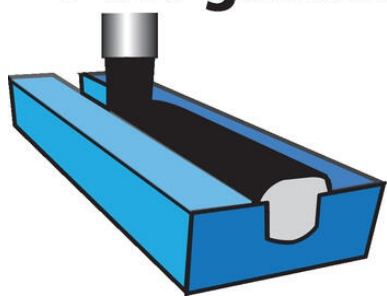
Please note that rule is ordered separately. Choose rule with notches, three-point rule or hook rule

### TECHNICAL DATA

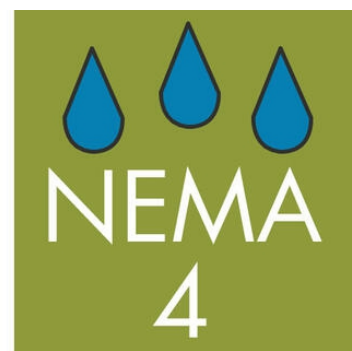
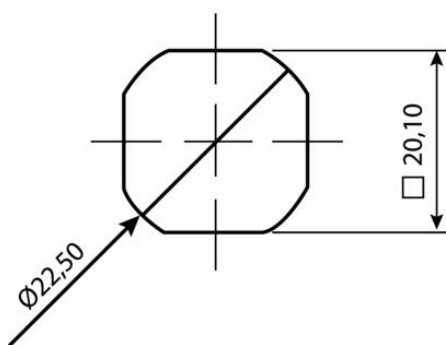
Configurable	No
Dimension X	37 mm
Material	Stainless Steel SIS2350 (316)
Opening angle	90 °



# Integrated PUR-gasket



 COMBI



# Integrated PUR-gasket

