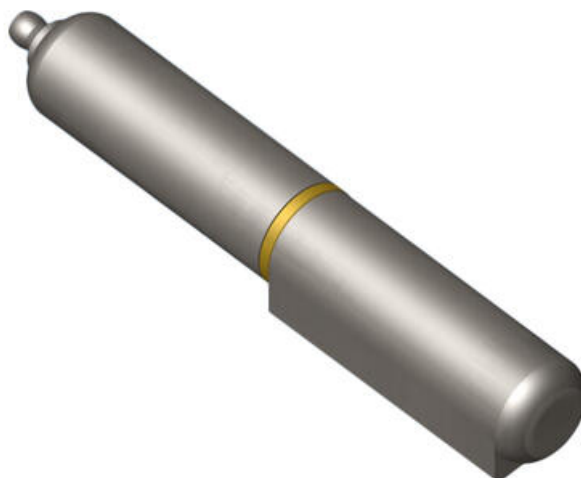


## WELD-ON HINGE WITH GREASED TIP

338005-A150

Weld-on hinge with grease nipple, 20mm dia, 150mm length

- Left or right installation
- 80-200mm
- Steel, brass
- 180° opening angle



### PRODUCT DESCRIPTION

Welding hinge with grease nipple. Universal right or left mounting.

### TECHNICAL DATA

Dimension D	13 mm
Dimension L	150 mm
Dimension S	25 mm
Material	Extruded steel profile
Material of shaft	Brass
Material washer	Brass

