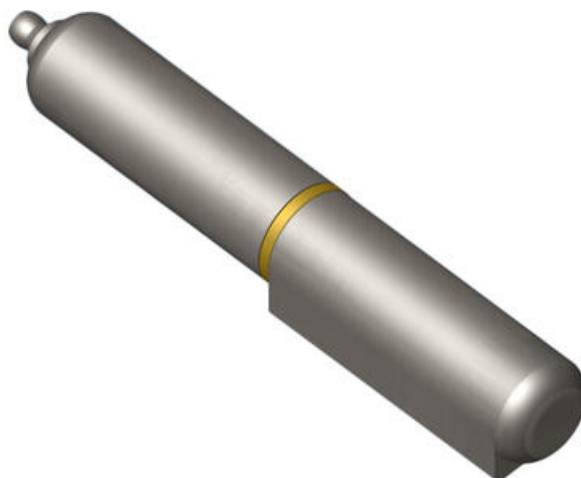


## WELD-ON HINGE WITH GREASED TIP

338005-A100

Weld on hinge with grease nipple, dia 16mm, length 100mm

- Left or right installation
- 80-200mm
- Steel, brass
- 180° opening angle



### PRODUCT DESCRIPTION

Welding hinge with grease nipple. Universal right or left mounting.

### TECHNICAL DATA

Dimension D	10 mm
Dimension L	100 mm
Dimension S	20 mm
Material	Extruded steel profile
Material of shaft	Brass
Material washer	Brass

