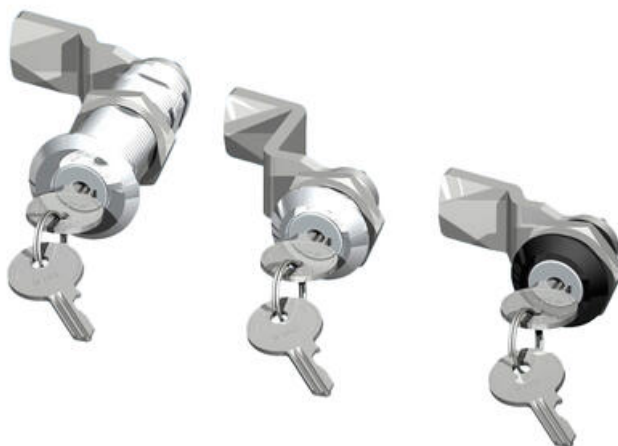


## CYLINDER LOCK 18,56.5MM

241336

Cylinder lock 18mm, Keyed to differ, Standard nut,  
Chrome plated

- 18 or 56.5mm lock housing
- IP54
- 180°
- Incl. 2 keys



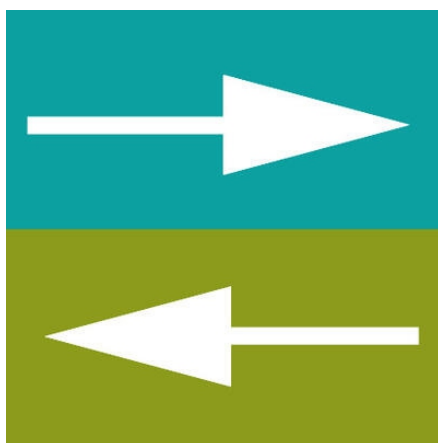
### PRODUCT DESCRIPTION

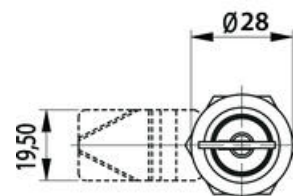
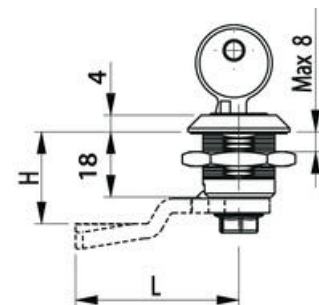
Cylinder lock with 90° rotation and universal design with a hole that enables clockwise or counter-clockwise rotation when opening / locking. Supplied with nut. Sealed to protection class IP54. Comes with two keys. Master key system supplied upon request.

Please note that rule is ordered separately. Choose: rule with notches, three-point rule or hook rule.

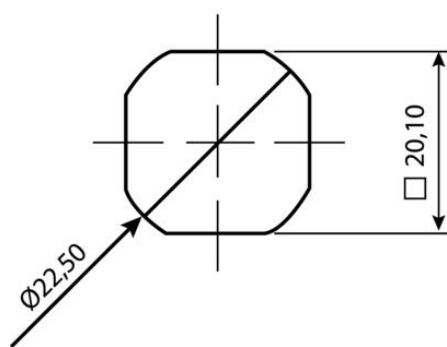
### TECHNICAL DATA

|                       |                                |
|-----------------------|--------------------------------|
| Configurable          | No                             |
| Material cylinder     | Stainless steel AISI 304, Zinc |
| Material lock housing | Zinc, chrome                   |
| Material nut          | Zinc plated, Zinc              |
| Material terminal     | Zinc plated, Steel             |

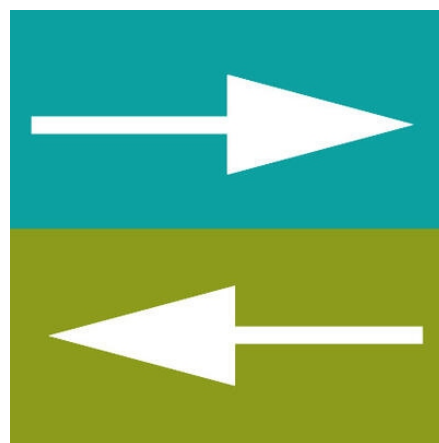




⊕ COMBI



IP54



⊕ COMBI

