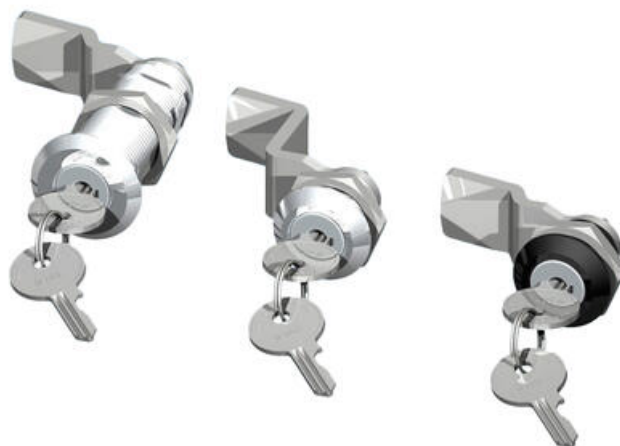


## CYLINDER LOCK 18,56.5MM

241535

Cylinder lock 18mm, Keyed alike IL101, Earthing nut, Black coated

- 18 or 56.5mm lock housing
- IP54
- 180°
- Incl. 2 keys



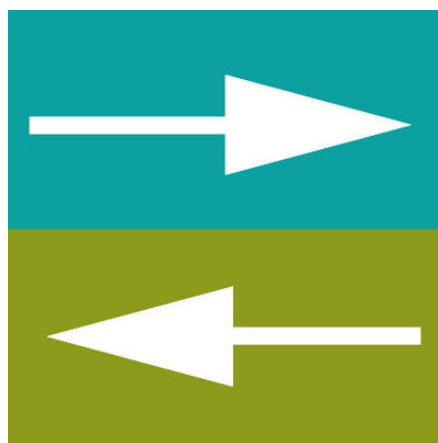
### PRODUCT DESCRIPTION

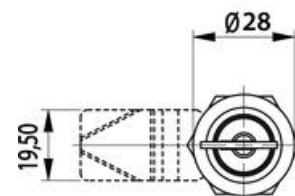
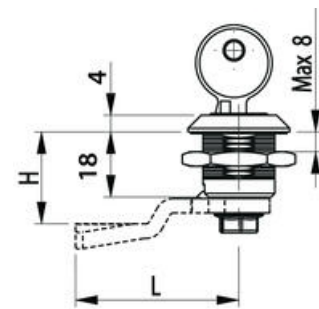
Cylinder lock with 90° rotation and universal design with a hole that enables clockwise or counter-clockwise rotation when opening / locking. Supplied with nut. Sealed to protection class IP54. Comes with two keys. Master key system supplied upon request.

Please note that rule is ordered separately. Choose: rule with notches, three-point rule or hook rule.

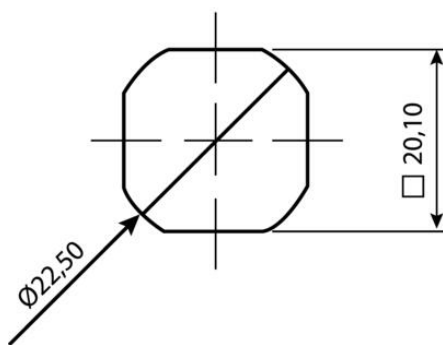
### TECHNICAL DATA

|                              |                                |
|------------------------------|--------------------------------|
| <b>Configurable</b>          | No                             |
| <b>Material cylinder</b>     | Stainless steel AISI 304, Zinc |
| <b>Material lock housing</b> | Zinc, black powder coated      |
| <b>Material nut</b>          | Zinc plated, Zinc              |
| <b>Material terminal</b>     | Zinc plated, Steel             |

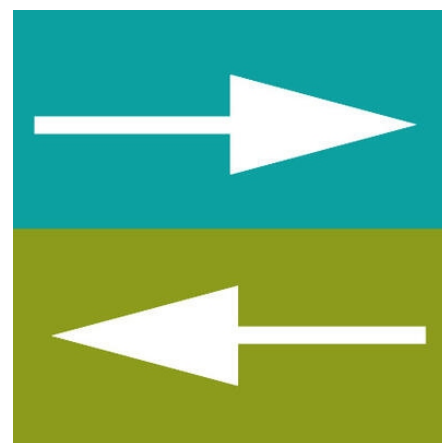




⊕ COMBI



IP54



⊕ COMBI

