

## QUARTER-TURN CLASSIC EXTENDED 30MM LOCK

2122-005230-5645

Quarter-turn 56mm latch, zinc/chrome, square8, IP65  
enclosed cam, 56/45

- 30mm lock housing
- IP65
- For insulated doors
- Extended lock housing
- Configurable



### PRODUCT DESCRIPTION

A complete lock consists of lock housing, nut, insert, washer, screw and rule. Protection class IP65 is obtained by placing an O-ring on the insert and a flat gasket on the lock housing.

The lock can be delivered unassembled, pre-assembled with an enclosed rule or in fully assembled condition.

90° lock with extended lock housing for insulated hatches and doors. Lock housing 45.5 mm can be fitted with fork spring for door thickness 29, 32 or 39 mm. Lock housing 56.5 can be fitted with fork spring for door thicknesses 40, 43 and 50 mm.

Fork spring is ordered separately (Art. no. 271105).

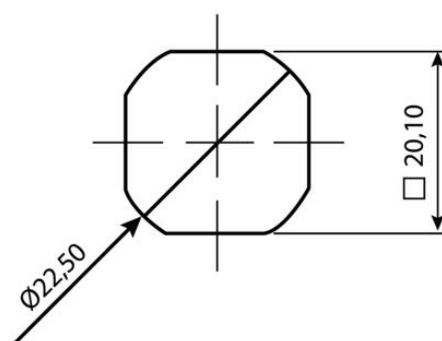
SM= Standard nut.

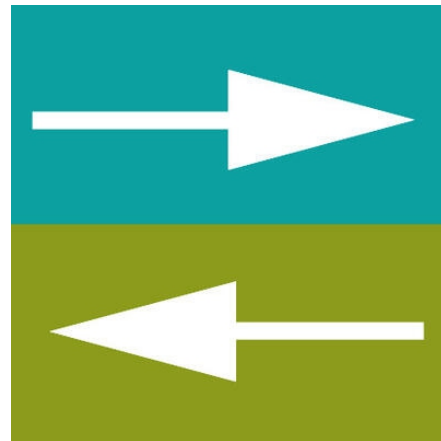
JM= Ground nut.

### TECHNICAL DATA

Configurable	Yes
Dimension H	56 mm
Dimension L	45 mm
Material lock housing	Zinc, chrome
Material rule	Steel
Opening angle	90 °

TABLE 101 - 101 - 101 - 101 - 101 - 101 - 101 - 101 - 101 - 101									
Label	Material	Color	Length	Width	Height	Weight	Volume	Surface	Notes
2122-005230-5645	SM	SM	56	45	20	0.000	0.000	0.000	
2122-005230-5645	SM	SM	56	45	20	0.000	0.000	0.000	
2122-005230-5645	SM	SM	56	45	20	0.000	0.000	0.000	
2122-005230-5645	SM	SM	56	45	20	0.000	0.000	0.000	
2122-005230-5645	SM	SM	56	45	20	0.000	0.000	0.000	
2122-005230-5645	SM	SM	56	45	20	0.000	0.000	0.000	
2122-005230-5645	SM	SM	56	45	20	0.000	0.000	0.000	
2122-005230-5645	SM	SM	56	45	20	0.000	0.000	0.000	
2122-005230-5645	SM	SM	56	45	20	0.000	0.000	0.000	



[illegible]

IP65

