

QUARTER-TURN CLASSIC EXTENDED 30MM LOCK

2112-005230-4445

Quarter-turn 45mm latch, zinc/chrome, square 8/M6,
IP65 enclosed cam

- 30mm lock housing
- IP65
- For insulated doors
- Extended lock housing
- Configurable



PRODUCT DESCRIPTION

A complete lock consists of lock housing, nut, insert, washer, screw and rule. Protection class IP65 is obtained by placing an O-ring on the insert and a flat gasket on the lock housing.

The lock can be delivered unassembled, pre-assembled with an enclosed rule or in fully assembled condition.

90° lock with extended lock housing for insulated hatches and doors. Lock housing 45.5 mm can be fitted with fork spring for door thickness 29, 32 or 39 mm. Lock housing 56.5 can be fitted with fork spring for door thicknesses 40, 43 and 50 mm.

Fork spring is ordered separately (Art. no. 271105).

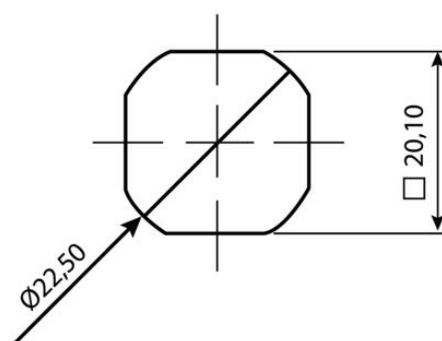
SM= Standard nut.

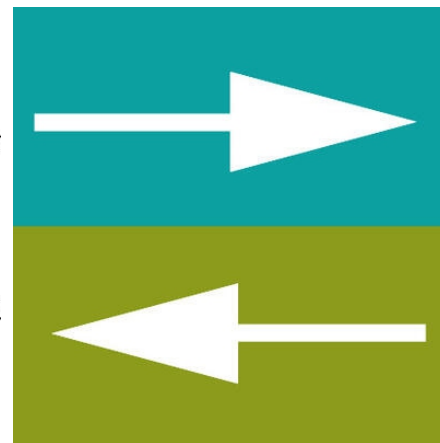
JM= Ground nut.

TECHNICAL DATA

Configurable	Yes
Dimension H	44 mm
Dimension L	45 mm
Material lock housing	Zinc, chrome
Material rule	Steel
Opening angle	90 °

TABLE 101 - 101 - 101 - 101 - 101 - 101 - 101 - 101 - 101 - 101									
Label	101	101	101	101	101	101	101	101	101
101-101-101-101-101-101-101-101-101-101	101	101	101	101	101	101	101	101	101
101-101-101-101-101-101-101-101-101-101	101	101	101	101	101	101	101	101	101
101-101-101-101-101-101-101-101-101-101	101	101	101	101	101	101	101	101	101
101-101-101-101-101-101-101-101-101-101	101	101	101	101	101	101	101	101	101
101-101-101-101-101-101-101-101-101-101	101	101	101	101	101	101	101	101	101
101-101-101-101-101-101-101-101-101-101	101	101	101	101	101	101	101	101	101
101-101-101-101-101-101-101-101-101-101	101	101	101	101	101	101	101	101	101
101-101-101-101-101-101-101-101-101-101	101	101	101	101	101	101	101	101	101
101-101-101-101-101-101-101-101-101-101	101	101	101	101	101	101	101	101	101



[illegible]