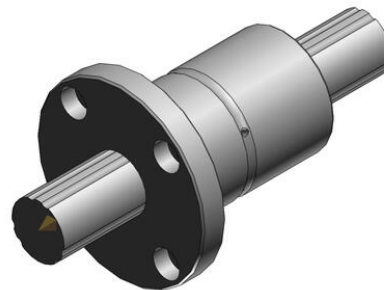


THK - LF - TORQUE BALL BUSHING
LF6-

- High load capacity in radial and rotational direction
- High performance in demanding environments.
- High speed and quiet
- Long maintenance intervals

**PRODUCT DESCRIPTION**

Ball bearings bushing model LF has, depending on size, 2 to 3 running grooves in the shaft.

TECHNICAL DATA

Dynamic load	1.18 kN
Length	25 mm
Outer diameter	14 mm
Static load	2.16 kN