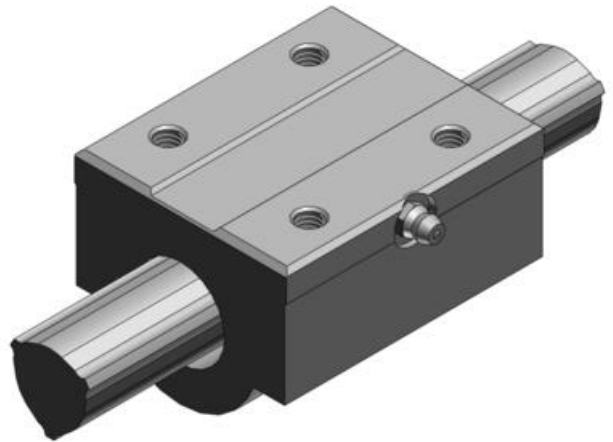


## THK - LBH - TORQUE BALL BUSHING

LBH50

- Compact torque bushing with a straight rectangular shoulder nut.
- High torque capability
- High speed and quiet
- Long maintenance intervals



### PRODUCT DESCRIPTION

A rigid rectangular spindle nut does not require a housing and can be mounted directly on the machine body.

This results in a compact, very stable linear control system.

The spline shaft has three pairs of precision machined bearing tracks, 120° apart.

The ball lines are held in place and circulate through a ball holder inside the bushing.

This also holds the balls in place if the bushing should be pulled off the shaft.

### TECHNICAL DATA

Dynamic load	55.1 kN
Height	88 mm
Length	115 mm
Static load	94.1 kN
Width	100 mm