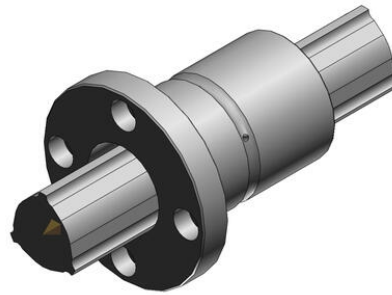


## THK - LBF - TORQUE BALL BUSHING

### LBF15



- Compact torque bush with flange
- Very high torque capability
- High speed and quiet
- Long maintenance intervals



### PRODUCT DESCRIPTION

The spline shaft has three pairs of precision machined tracks, 120° between the bearings.

## TECHNICAL DATA

Dynamic load	4.4 kN
Length	40 mm
Outer diameter	23 mm
Static load	8.4 kN