

## JUNG HYGHSPIN DOUBLE FLOW SERIES

Hygienic twin screw pump

JPS HYGHSPIN 90DF

- Flow rate 1m<sup>3</sup>/h to 30m<sup>3</sup>/h
- Pressure up to 50 bar
- Viscosity up to 1,000,000 cSt
- Temperature -10°C to +130°C (160°C)
- Mx. particle size 19mm



### PRODUCT DESCRIPTION

The HYGHSPIN Double Flow extends the range of the HYGHSPIN series for high differential pressures of up to 50 bar, making it suitable for high-pressure applications.

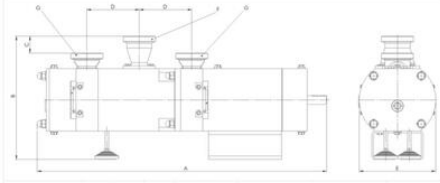
The HYGHSPIN Double Flow is a double flow twin screw pump made of stainless steel. It has two external inlet connections and one central outlet connection. A two-sided bearing controls the shaft deflection. The axial thrust caused by the high pressures is compensated internally. The shaft seals are arranged on the suction side. In brief, all the essential components are loaded only slightly despite the high differential pressures so that increased reliability and excellent durability is the result. The simultaneous utilisation of two stages also makes it possible to convey a large volume flow.

The HYGHSPIN Double Flow is the hygienic and gentle handling solution for high pressure applications.

### TECHNICAL DATA

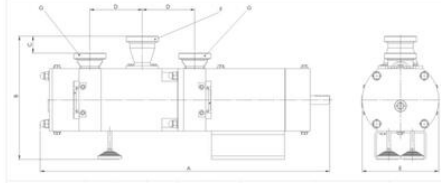
<b>Connection type</b>	Different sizes and connector standards by arrangement
<b>Differential pressure</b>	50
<b>Flow max</b>	40 m <sup>3</sup> /h
<b>Material of elastomers</b>	EPDM, FPM, HNBR (Nitrile rubber), FFPM
<b>Material of wetted parts</b>	Stainless steel 316/316L (1.4401/1.4404), Stainless steel 1.4462, 1.4404, Stainless Steel 1.4539
<b>Maximum diameter of solid material</b>	11.5 mm
<b>Pump orientation</b>	Horizontal, vertical or lateral
<b>Temperature operational max</b>	180 °C
<b>Temperature operational min</b>	-10 °C
<b>Viscosity</b>	0.5 - 1,000,000 mPas

Mit HYGISPIN Double Flow kompaktmontiert (mm)



Pumpstörk	A	B	C	D	E	G (Drehsp)	F (Drehsp)	VW (kg)
Hygiene 90CF	900	418	57	178	259	EN50-DH65 (2" x 2,5")	DN65-DN60 (2,5" x 2")	310

Mit HYGISPIN Double Flow kompaktmontiert (mm)



Pumpstörk	A	B	C	D	E	G (Drehsp)	F (Drehsp)	VW (kg)
Hygiene 90CF	900	418	57	178	259	EN50-DH65 (2" x 2,5")	DN65-DN60 (2,5" x 2")	310