

## JUNG HYGHSPIN HOPPER SERIES PUMP

Hygienic twin screw pump

JPS HYGHSPIN 90H

- Flow 100l/h to 30m³/h
- Pressure up to 25 bar
- Viscosity up to 50,000,000 cSt
- Temperature -10°C to +130°C (160°C)
- Max. particle size 45mm



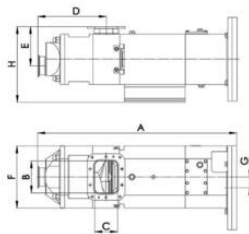
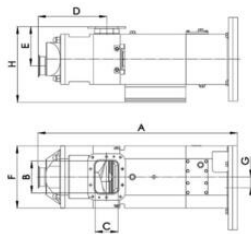
### PRODUCT DESCRIPTION

The HYGHSPIN Hopper is an addition to the worldwide tried and tested HYGHSPIN series of Twin Screw Pumps made of stainless steel. The innovative twin screw pump with a funnel opening is capable of transporting products with viscosities of up to 1000 Pas. Its conveyor screws are extended so that they can induct non-flow capable products below the inlet funnel in a similar principle to an extruder and then feed them into the pump chamber. This ensures a particularly gentle handling - an external extruder can be completely dispensed with.

The HYGHSPIN Hopper therefore provides a very attractive 3-in-1 solution: Feeding, conveying and cleaning take place in only one component. It is available in block design or with free shaft end.

### TECHNICAL DATA

Connection type	Different sizes and connector standards by arrangement
Differential pressure	25 bar
Flow max	25 m³/h
Material of elastomers	EPDM, FPM, HNBR (Nitrile rubber), FFPM
Material of wetted parts	Stainless steel 316/316L (1.4401/1.4404), Stainless steel 1.4462, 1.4404, Stainless Steel 1.4539
Maximum diameter of solid material	30 mm
Pump orientation	Horizontal, vertical or lateral
Temperature operational max	180 °C
Temperature operational min	-10 °C
Viscosity	0.5 - 1,000,000 mPas



Pumpstörkle	A	B	C	D	E	F	G	H	Inlegg (steel)	Wt
70 Hopper	611mm	98mm	62mm	211mm	175mm	199mm	85mm	272mm	DN65 DN100 (2 1/2" 4")	70kg
90 Hopper	814mm	134mm	93mm	278mm	164mm	250mm	45mm	317mm	DN80 DN150 (3" 6")	135kg
125 Hopper	1060mm	182mm	122mm	384mm	203mm	340mm	62.5mm	419mm	DN100 DN200 (4" 8")	302kg

Pumpstörkle	A	B	C	D	E	F	G	H	Inlegg (steel)	Wt
70 Hopper	611mm	98mm	62mm	211mm	175mm	199mm	85mm	272mm	DN65 DN100 (2 1/2" 4")	70kg
90 Hopper	814mm	134mm	93mm	278mm	164mm	250mm	45mm	317mm	DN80 DN150 (3" 6")	135kg
125 Hopper	1060mm	182mm	122mm	384mm	203mm	340mm	62.5mm	419mm	DN100 DN200 (4" 8")	302kg