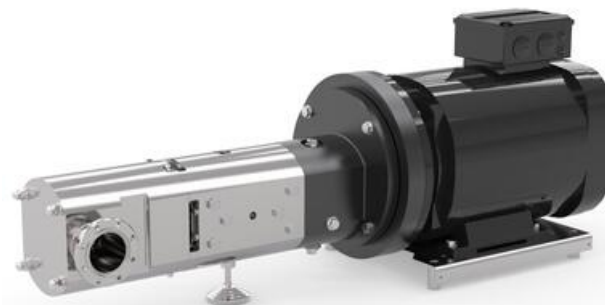


## JUNG HYGHSPIN ENGINEERED SERIES

### Hygienic twin screw pump

#### HYGHSPIN ENGINEERED

- Flow 30l/h to 350m³/h
- Pressure up to 50 Bar
- Viscosity up to 1,000,000 cSt
- Temperature -10°C to +130°C (180°C)
- Max. particle size 67 mm



#### PRODUCT DESCRIPTION

The HYGHSPIN Engineered series is created by combining different versions of the HYGHSPIN series, making the Engineered Series a bespoke product. With a HYGHSPIN Engineered, we can supply you with the design and the scope of delivery which you require. A variety of special solutions are possible. Irrespective of whether as a heated version, pumps with vapour locked housing seals, special materials or mobile units complete with control systems, we can jointly create with you the optimal design for your application.

#### TECHNICAL DATA

Flow max	350 m³/h
Material of elastomers	HNBR (Nitrile rubber)
Material of pump house	Stainless steel 316L
Material of seals	SiC/SiC
Material terminal	Stainless steel 316L
Particle size max	45 mm
Pressure max	50 bar
Temperature operational max	180 °C
Temperature operational min	-10 °C