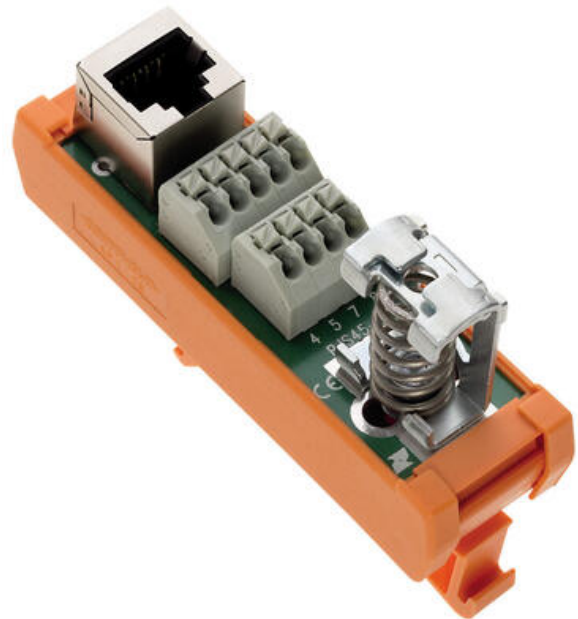


## ETHERNET AND USB INTERFACE MODULES

RJ, RJU, RJS, USB, IX-SH

16502.2  
 SPE-SH, Interface module for SPE (single pair ethernet), shielded, push-in connections and SPE connector, 100 Mbps

- Compact
- RJ 45 Shielded versions
- USB A/B
- Industrial Ethernet
- 2-Wire Single Pair Ethernet



### PRODUCT DESCRIPTION

This range of interface modules use the standardized RJ45 Ethernet and USB connectors from computer components, Ethernet ready devices or modems and have screw PCB terminals for easy connection.

The RJS45-SH is even more compact and uses push in connectors and has the added spring shield clip for locally grounding the cable.

New additions to the range include the Industrial SPE (Single Pair Ethernet) interface with spring shield clip and the IX Industrial Ethernet.

## TECHNICAL DATA

### GENERAL DATA

Connector type	SPE
Connection type	Push-in
Number of connections	1
Number of poles	3
Shielded	Yes

### DIMENSIONS

Length	47 mm
Width	22 mm
Height TS 35/7.5	63 mm

### CONNECTION DATA

<b>Cross section single wire from</b>	0.08 mm <sup>2</sup>
<b>Cross section stranded with ferrule to</b>	0.5 mm <sup>2</sup>
<b>Cross section single wire to</b>	1.5 mm <sup>2</sup>
<b>Cross section stranded with ferrule from</b>	0.14 mm <sup>2</sup>
<b>Stripping length</b>	9 mm
<b>Contact material</b>	CuAl with gold plating 0.76 µm
<b>Cable diameter min</b>	3 mm
<b>Cable diameter max</b>	6 mm

## RATINGS

<b>Operating voltage ac/dc max</b>	60 V
<b>Current carrying capacity per channel max</b>	4 A
<b>DIN-VDE Spec</b>	DIN VDE 0110 / EN 50178
<b>Overvoltage category</b>	III
<b>Contamination degree</b>	2
<b>Test voltage eff</b>	0.75 kV
<b>Operating temperature from</b>	-40 °C
<b>Operating temperature to</b>	85 °C

## ADDITIONAL DATA

<b>Tariff code</b>	85369010
<b>Country of origin</b>	NL
<b>Weight</b>	23 g
<b>Pack size</b>	1

