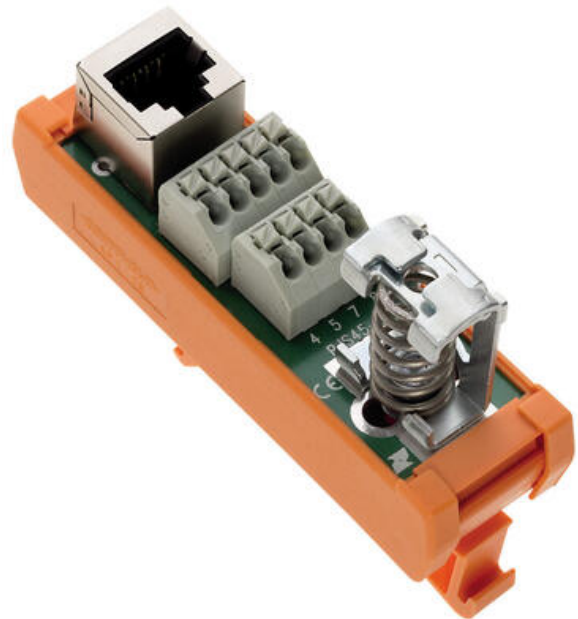


ETHERNET AND USB INTERFACE MODULES

RJ, RJU, RJS, USB, IX-SH

15672.2
RJU11/RJU12, RJ11/12 Interface module without shield,
Female, screw terminals

- Compact
- RJ 45 Shielded versions
- USB A/B
- Industrial Ethernet
- 2 -Wire Single Pair Ethernet



PRODUCT DESCRIPTION

This range of interface modules use the standardized RJ45 Ethernet and USB connectors from computer components, Ethernet ready devices or modems and have screw PCB terminals for easy connection.

The RJS45-SH is even more compact and uses push in connectors and has the added spring shield clip for locally grounding the cable.

New additions to the range include the Industrial SPE (Single Pair Ethernet) interface with spring shield clip and the IX Industrial Ethernet.

TECHNICAL DATA

GENERAL DATA

Connector type	RJ 11/12
Connection type	Screw
Number of connections	1
Number of poles	6
Shielded	No

DIMENSIONS

Length	47 mm
Width	26 mm
Height TS 35/7.5	61 mm

CONNECTION DATA

Cross section single wire from	0.2 mm ²
Cross section stranded with ferrule to	2.5 mm ²
Cross section single wire to	2.5 mm ²
Cross section stranded with ferrule from	0.2 mm ²
Stripping length	7 mm
Torque	0.6
Contact material	Cu-Sn-P 1.27 µm Au 1.27 µm Ni

RATINGS

Operating voltage ac/dc max	125 V
Current carrying capacity per channel max	1 A
DIN-VDE Spec	DIN VDE 0110 / EN 50178
Overvoltage category	III
Contamination degree	2
Test voltage eff	0.75 kV
Operating temperature from	-20 °C
Operating temperature to	50 °C
Durability (plugging cycles)	750

ADDITIONAL DATA

Tariff code	85369010
Country of origin	NL
Weight	56 g
Pack size	1