

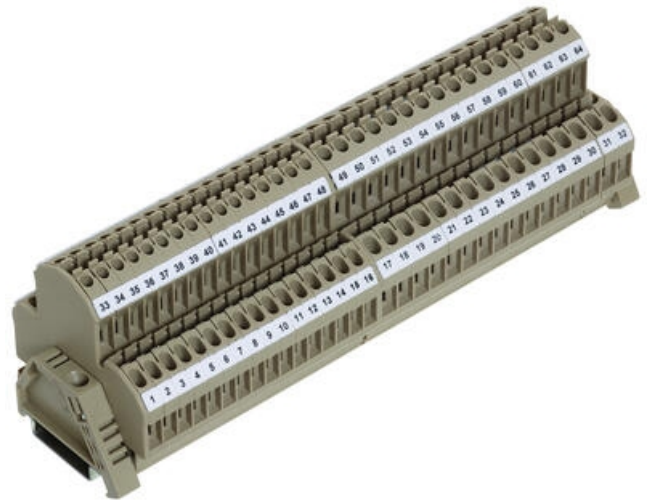
## DOUBLE DECK TERMINALS - RKD 2.5-4MM<sup>2</sup>

RKD, RKDG

2584.5

RKDG 4 Blue, 4mm<sup>2</sup> Double deck, same level

- Screw cross connectors
- Temperature resistance -40 °C...+105 °C
- Polyamide 6.6 UL94-V2
- Same level screw option
- Versions with electronic components fitted



### PRODUCT DESCRIPTION

### TECHNICAL DATA

#### GENERAL DATA

Rated wire cross section	4 mm <sup>2</sup>
Colour	Blue
Rated voltage IEC	500 V
Rated current IEC	32 A
Mounting	TS 35
Rated impulse voltage	6 kV
Overvoltage category	III
Contamination degree	3
Approvals	KEMA KUR

#### DIMENSIONS

Length	58.5 mm
Width	6 mm
Height TS 35/7.5	60 mm

#### CONNECTION DATA

Connections	2 x 2
Number of levels	2

Plug gauge acc. EN 60 947-1	A4
Cross connect channels	1
Cross section single wire from	0.2 mm <sup>2</sup>
Cross section single wire to	4 mm <sup>2</sup>
Cross section stranded wire from	0.2 mm <sup>2</sup>
Cross section stranded wire to	4 mm <sup>2</sup>
Cross section stranded with ferrule from	0.2 mm <sup>2</sup>
Cross section stranded with ferrule to	4 mm <sup>2</sup>
Rated wire cross section from (AWG)	22
Rated wire cross section to (AWG)	12
Stripping length	9 mm
Screw size	M 3
Screw type	Slotted
Torque min	0.5
Torque max	1

## MATERIALS

Insulation material	Polyamide 6.6
Flammability class	UL94-V2
Operating temperature from	-40 °C
Operating temperature to	105 °C

## APPROVALS

KEMA KEUR test standard	EN 60947-7-1:2009
-------------------------	-------------------

## ADDITIONAL DATA

Tariff code	85369010
Country of origin	DE
Weight	16.06 g
Pack size	100
Type of terminal	Screw Terminals, DIN Rail terminals