

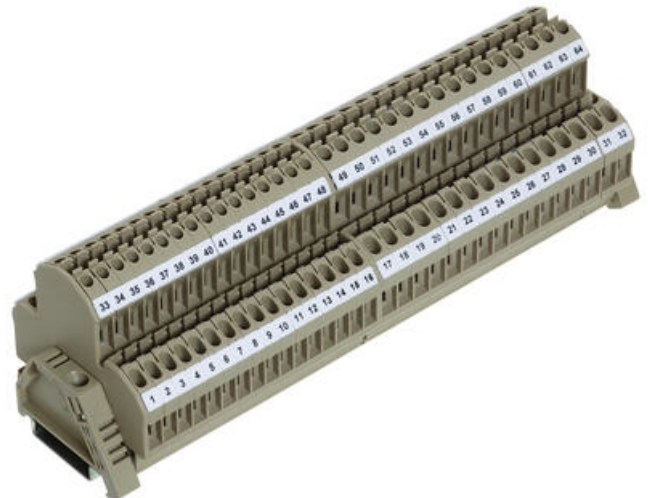
DOUBLE DECK TERMINALS - RKD 2.5-4MM²

RKD, RKDG

1581.2

RKD 4/35/SV Beige, 4mm² Linked double deck

- Screw cross connectors
- Temperature resistance -40 °C...+105 °C
- Polyamide 6.6 UL94-V2
- Same level screw option
- Versions with electronic components fitted



PRODUCT DESCRIPTION

The CONTA-CLIP RKD double-deck terminal blocks (2.5 mm² & 4 mm²) are designed for compact yet powerful wiring in control panels. These screw-connection rail-mount terminals are built from flame-retardant polyamide 6.6 (UL94-V2) and withstand operating temperatures from -40 °C to +105 °C. They feature dual-level, dual-circuit configurations—two conductors per level—allowing up to four conductors per 5 mm block width. Rated 500 V, 24 A (IEC) / 20 A (CSA/UL), and overvoltage category III, they support solid, stranded wires up to 4 mm² (AWG 14) or ferrules to 2.5 mm². Connection is via M2.5 slotted screws with 0.4–0.8 Nm torque, and 7 mm stripping length, offering secure, test-and-linking capabilities while accommodating cross-connect channels and pick-off points.

In real-world installations, these RKD blocks are ideal for junctions where space is tight—such as next to cable ducts or inside compact boxes—thanks to their slim 5 mm footprint and top-entry slots. Their modular design (mounted on TS 35/7.5 rails) simplifies adding/removing conductors and testing circuits. They are particularly suited to power distribution, control and automation systems, or any application requiring high-density, reliable wiring with easy access for maintenance. Approvals like KEMA-KEUR, CSA, UL 1059, and EAC ensure compliance in industrial environments, making the RKD series a robust choice for professional panel builders.

TECHNICAL DATA

GENERAL DATA

Rated wire cross section	4 mm ²
Colour	Beige
Rated voltage IEC	500 V
Rated current IEC	32 A
Mounting	TS 35
Rated impulse voltage	6 kV
Overvoltage category	III
Contamination degree	3
Approvals	CSA, CSA US, KEMA KUR, EAC
Additional information	connected vertically

DIMENSIONS

Length	60.2 mm
Width	6 mm
Height TS 35/7.5	56 mm

CONNECTION DATA

Connections	4
Number of levels	2
Plug gauge acc. EN 60 947-1	A4
Cross connect channels	1
Number of test pick off options	1
Cross section single wire from	0.2 mm ²
Cross section single wire to	4 mm ²
Cross section stranded wire from	0.2 mm ²
Cross section stranded wire to	4 mm ²
Cross section stranded with ferrule from	0.2 mm ²
Cross section stranded with ferrule to	4 mm ²
Rated wire cross section from (AWG)	22
Rated wire cross section to (AWG)	12
Stripping length	9 mm
Screw size	M 3
Screw type	Slotted
Torque min	0.5
Torque max	1

MATERIALS

Insulation material	Polyamide 6.6
Flammability class	UL94-V2
Operating temperature from	-40 °C
Operating temperature to	105 °C

APPROVALS

Rated voltage CSA	300 V
Rated current CSA	30 A
CSA test standard	C22.2 No 158
Rated voltage CSAus	300 V
Rated current CSAus	30 A

CSAus test standard	UL 1059
EAC test standard	TR ZU 004/2011
KEMA KEUR test standard	EN 60947-7-1:2009

ADDITIONAL DATA

Tariff code	85369010
Country of origin	CZ
Weight	14.1 g
Pack size	100
Type of terminal	Screw Terminals, DIN Rail terminals