

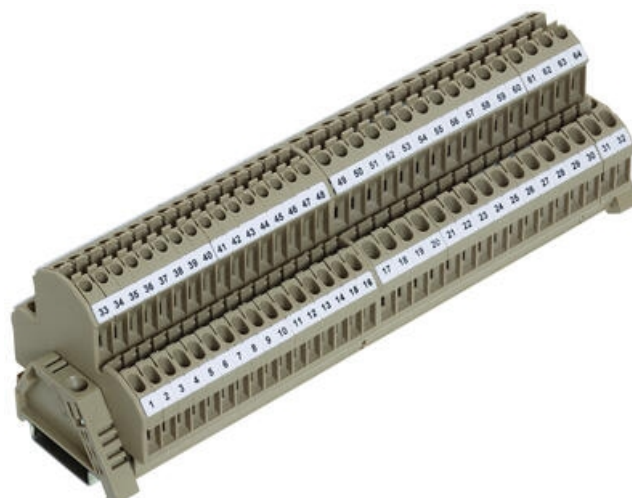
## DOUBLE DECK TERMINALS - RKD 2.5-4MM<sup>2</sup>

RKD, RKDG

1042.2

RKD 4/G, 4mm<sup>2</sup> Double deck with LED, 24V ac, multi-foot

- Screw cross connectors
- Temperature resistance -40 °C...+105 °C
- Polyamide 6.6 UL94-V2
- Same level screw option
- Versions with electronic components fitted



### PRODUCT DESCRIPTION

### TECHNICAL DATA

#### GENERAL DATA

Rated wire cross section	4 mm <sup>2</sup>
Colour	Beige
Rated voltage	24 V AC
Rated current IEC	10 A
Mounting	TS 35 and TS 32
Rated impulse voltage	6 kV
Overvoltage category	III
Contamination degree	3
Approvals	UL, CSA, GL, KEMA KUR, EAC
Additional information	with LED status display

#### DIMENSIONS

Length	60.2 mm
Width	6 mm
Height TS 35/7.5	61 mm
Height TS 32	65.5 mm

#### CONNECTION DATA

Number of levels	2
------------------	---

Plug gauge acc. EN 60 947-1	A4
Cross connect channels	2
Cross section single wire from	0.2 mm <sup>2</sup>
Cross section single wire to	4 mm <sup>2</sup>
Cross section stranded wire from	0.2 mm <sup>2</sup>
Cross section stranded wire to	4 mm <sup>2</sup>
Cross section stranded with ferrule from	0.2 mm <sup>2</sup>
Cross section stranded with ferrule to	4 mm <sup>2</sup>
Rated wire cross section from (AWG)	22
Rated wire cross section to (AWG)	12
Stripping length	9 mm
Screw size	M 3
Screw type	Slotted
Torque min	0.5
Torque max	1

## MATERIALS

Insulation material	Polyamide 6.6
Flammability class	UL94-V2
Operating temperature from	-40 °C
Operating temperature to	105 °C

## APPROVALS

UL test standard	UL 1059
Rated voltage CSA	300 V
Rated current CSA	25 A
CSA test standard	C22.2 No 158
GL test standard	IEC 60947-7-1:2002
EAC test standard	TR ZU 004/2011
KEMA KEUR test standard	EN 60947-7-1:2009

## ADDITIONAL DATA

Tariff code	85369010
Country of origin	BG
Weight	13.8 g
Pack size	100

Type of terminal

Screw Terminals, DIN Rail terminals