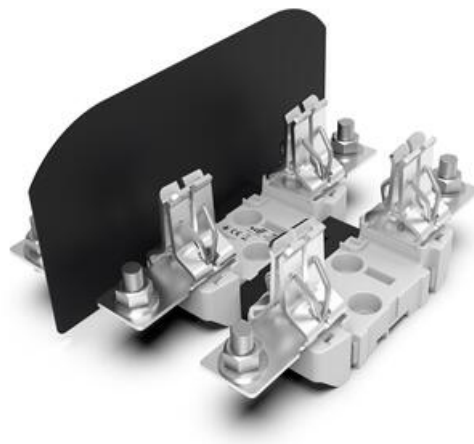


NH ST FUSE BASES 690V/800V

352300

Polyester base NH 1 ST SINGLE POLE 250 A
690V/800V "Screw & rail din fixing" Spring Contact
Screw / Screw connection IP00

- Rated current up to 2500A
- Suitable for fuse sizes between NH00 up to NH4
- Single pole and three pole variants
- Various terminal connection types



PRODUCT DESCRIPTION

NH ST fuse bases are compatible with NH Knife-blade fuse links, providing reliable protection for various electrical applications. These fuse bases offer easy installation and options for mounting on DIN/EN rails or via screw fixing. Available in single-phase or three-pole configurations, NH ST fuse bases ensure versatile connectivity options through screws, fixed nuts, or clamps.

Constructed from high-quality, self-extinguishing materials, NH ST fuse bases prioritize safety and durability. Their silver-plated copper contacts enhance conductivity and minimize the risk of corrosion, ensuring long-term performance. Notably, NH ST fuse bases feature two contact styles, one of which incorporates a double spring mechanism for optimal operational efficiency.

Adhering to IEC, EN, and DIN standards, NH ST fuse bases meet industry requirements for quality and reliability. A wide range of accessories, including contact covers, fuse link covers, and partition walls, enables customisation while achieving an IP20 protection index.

TECHNICAL DATA

GENERAL DATA

Type	NH1
Rated current	250 A
Voltage ac max	800 V
Voltage dc max	750 V

ADDITIONAL DATA

Weight	320 g
Pack size	1