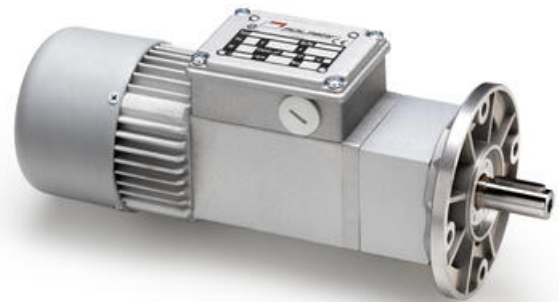


MINIMOTOR - ACE - COAXIAL GEAR MOTOR WITH FURTHER PLANETARY REDUCTION

ACE66TB3-0.6
230/400V 3 ph 0.6rpm 23.5Nm B3 mount

- Single or three phase versions
- 10 to 74W delivered power
- Up to 23.5Nm rated torque
- B3 foot or B5 flange mounting
- IP65 as standard



PRODUCT DESCRIPTION

High quality, designed from the ground up to IP65 rated compact gear motor.

Physically smaller than the majority of similar powered gear motors due to the use of high quality components in precision manufacturing.

Ideally suited to many applications, including label and packaging machines, conveyors, pharmaceutical and medical machinery

MOTOR: asynchronous single or three phase with 2 or 4 poles, totally enclosed with external ventilation. Thermal safety cutout on single phase model. Class F. IP65 protection according to CEI EN 60529.

GEAR UNIT: first stage with die-cast aluminium case, second stage in steel. Case-hardened and hardened gear pairs with shafts rotating on roller bearings. Lubrication with long life oil. Sealing rings made in special rubber for high temperatures. 15 gear ratios (i) available, from 37 to 2209.5. Rated torque 23.5 Nm. Version B3 or B5.

[Please click here for 2D and 3D drawings](#)

TECHNICAL DATA

Input voltage ac	230Δ / 400Y
Nominal speed	0.6 rpm
Output power	10 W
Rated current	0.19Δ / 0.11YA
Rated torque	23.5Nm
Ratio	2209.5:1

B3

Type	A	B	C	D	E	F	G	H	K	L	L1	N	R	S	T	V	X	X1	Y	Y1	Y2	V3	W	Z	Z1	Z2	Flange Mounting Hole Pitch mm	
ACE...	74	63	24	14	30	5	16	43	15.5	144	202	41	81	86	145	12	60	80	60	14.5	55	11	8	3.5	56	43	50	2.543
ACE..P	74	63	24	14	30	5	16	43	15.5	144	202	41	81	86	145	12	60	80	60	14.5	55	11	8	3.5	56	43	50	2.910
ACE..P2	74	63	24	14	30	5	16	43	15.5	144	202	41	81	86	145	12	60	80	60	14.5	55	11	8	3.5	56	43	50	3.320

CAD model selection

 Electric motor
15.05.2017

 Geared motor
15.05.2017

 Worm gearmotor
15.05.2017

 Brushless servomotor
15.05.2017

 Clean products
15.05.2017

 Sensors
15.05.2017

Please see product description above for 2D and 3D drawings

CAD model selection

 Electric motor
15.05.2017

 Geared motor
15.05.2017

 Worm gearmotor
15.05.2017

 Brushless servomotor
15.05.2017

 Clean products
15.05.2017

 Sensors
15.05.2017

Please see product description above for 2D and 3D drawings

