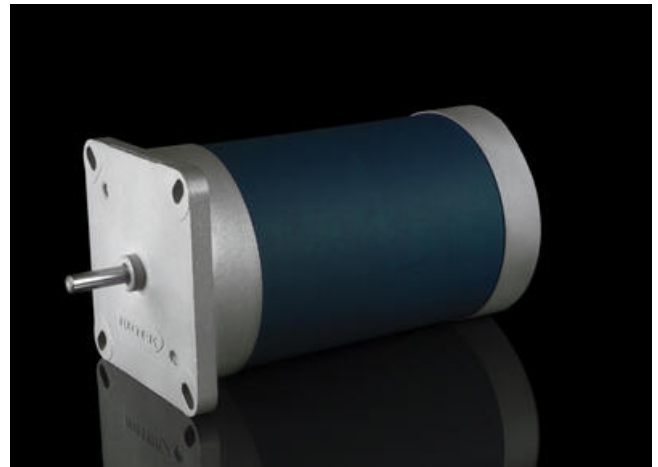


ROTEK - ROSLYDE AC MOTOR

ROSLYDE 44.0

1~24Vac, 50/60Hz, 1500/1800rpm, 7.0/6.0Ncm

- 1→3 phase, 24V→400Vac, 50/60Hz, 11→40W, 6→26Ncm, 1500→1800rpm
- 65mm Ø
- Constant speed
- Short start-up and stopping times
- Low-vibration, low-noise & low running temperature



PRODUCT DESCRIPTION

COMPACT MOTORS FOR DEMANDING APPLICATIONS

ROSLYDE - Low-vibration and low-noise

When smooth running is the prime concern, our ROSLYDE motors are the ideal solution.

Their low-vibration, low-noise running is down to our SmoothDrive Technology.

This makes them the motor of choice for laboratory and domestic applications such as wood-burning stoves and rotary heat exchangers.

However, the self-holding torque typical of synchronous motors is reduced to a minimum.

TECHNICAL DATA

Capacitor	60 µF
Current	710/670 mA
Diameter	65 mm
Frequency	50/60 Hz
Input	17/16 VA
Insulation class	F 155°C
IP class	IP40, IP55
Output	11 W
Rated torque	7/6 Ncm
Shaft diameter	5 mm
Speed	1500/1800 rpm
Supply voltage options	24 V AC

PLANETARY GEARS

max. 3 - 50 Nm
i = 6.1 - 508.1
output shaft 8 - 14 mm
for motors up to 100 W

» more



WORM GEARS

max. 5 - 12 Nm
i = 2.5:1 - 100:1
axis spacing 31 mm
for motors up to 50 W

» more



SPUR GEARS

max. 6 - 12 Nm
i = 5.1 - 133:1
output shaft 8 - 12 mm
for motors up to 30 W

» more



FLAT GEARS

max. 10 - 27 Nm
i = 50.1 - 1586:1
output shaft 8 - 15 mm
for motors 20 - 50 W

» more



**ONE TECHNOLOGY
BOUNDLESS POSSIBILITIES**



FEATURES

- low noise gearbox
- compact design
- continuous lubrication
- continuous bearing

DESIGN

- metal housing
- output shaft
- input shaft
- output shaft and

ELECTRICAL

- continuous
- output shaft
- output shaft
- output shaft
- output shaft

ACCESSORIES

- output shaft
- output shaft
- output shaft
- output shaft
- output shaft

PLANETARY GEARS

max. 3 - 50 Nm
i = 6.1 - 508.1
output shaft 8 - 14 mm
for motors up to 100 W

» more



WORM GEARS

max. 5 - 12 Nm
i = 2.5:1 - 100:1
axis spacing 31 mm
for motors up to 50 W

» more



SPUR GEARS

max. 6 - 12 Nm
i = 5.1 - 133:1
output shaft 8 - 12 mm
for motors up to 30 W

» more



FLAT GEARS

max. 10 - 27 Nm
i = 50.1 - 1586:1
output shaft 8 - 15 mm
for motors 20 - 50 W

» more



**ONE TECHNOLOGY
BOUNDLESS POSSIBILITIES**



FEATURES

- low noise gearbox
- compact design
- continuous lubrication
- continuous bearing

DESIGN

- metal housing
- output shaft
- input shaft
- output shaft and

ELECTRICAL

- continuous
- output shaft
- output shaft
- output shaft
- output shaft

ACCESSORIES

- output shaft
- output shaft
- output shaft
- output shaft
- output shaft