

## MINIMOTOR - PCEF WORM GEARED MOTOR WITH FURTHER PLANETARY GEAR

PCEF5T2B3-30.5

- For clean environments
- IP67 as standard
- Up to 90Nm rated torque
- Minimal dirt trap points
- Epoxy coated with no external fan



### PRODUCT DESCRIPTION

White epoxy coating for increased protection against chemicals and harsh working environments.  
IP67 rated with no external fan.

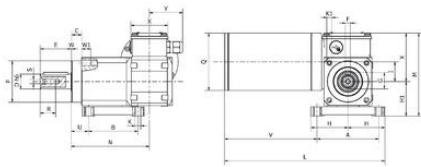
MOTOR: Asynchronous single or three phase with 2 poles, totally enclosed. Thermal safety feature. Class H winding.

GEAR UNIT: Die-cast aluminium casing in the first reduction stage, with worm screw and steel casing in the second planetary stage, with three internal planetary gears. Wheel rim in bronze 120-160 HB hardness. Hardened steel screw with ground threads rotating on ball and roller bearings. Output shaft available in stainless steel upon request.

Lubrication with special long life oil. Sealing rings made in special rubber for high temperatures. . Rated torque 90 Nm. Version B3 or B5. B5/S left version - B5/D right version.

### TECHNICAL DATA

Input voltage ac	230Δ/400Y
IP class	IP67
Nominal speed	30.5 rpm
Nominal torque	69.3
Output power	190 W
Rated current	1.56Δ/0.9Y
Ratio	95:1



B3

Type Temp Type	A	B	C	D	E	F	G	H	M	K	L	M	N	P	Q	R	S	U	V	W	X	Y	Max Output Power Per Pin	
PCF472	100	80	16	24	50	8	27	80	56	9	269	135	127	67	80	25	M8	28	140	1	15	80	54	8,270
PCF472	100	80	16	24	50	8	27	80	56	9	281	135	127	67	80	25	M8	28	171	1	15	80	85	13,670

CM model selection

Electric motors

Gear motor

Worm gearmotors

Brushless servomotors

Clean products

Please see product description above for 2D and 3D drawings

CM model selection

Electric motors

Gear motor

Worm gearmotors

Brushless servomotors

Clean products

Please see product description above for 2D and 3D drawings