

MINIMOTOR - PCEF WORM GEARED MOTOR WITH FURTHER PLANETARY GEAR

PCEF4T2B3-30

- For clean environments
- IP67 as standard
- Up to 90Nm rated torque
- Minimal dirt trap points
- Epoxy coated with no external fan



PRODUCT DESCRIPTION

White epoxy coating for increased protection against chemicals and harsh working environments. IP67 rated with no external fan.

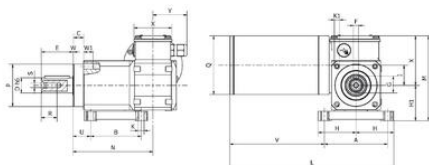
MOTOR: Asynchronous single or three phase with 2 poles, totally enclosed. Thermal safety feature. Class H winding.

GEAR UNIT: Die-cast aluminium casing in the first reduction stage, with worm screw and steel casing in the second planetary stage, with three internal planetary gears. Wheel rim in bronze 120-160 HB hardness. Hardened steel screw with ground threads rotating on ball and roller bearings. Output shaft available in stainless steel upon request.

Lubrication with special long life oil. Sealing rings made in special rubber for high temperatures. . Rated torque 90 Nm. Version B3 or B5. B5/S left version - B5/D right version.

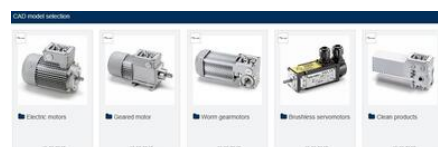
TECHNICAL DATA

4967_Rated current (A)	0.65Δ/0.38Y
Input voltage ac	230Δ/400Y
IP class	IP67
Nominal speed	30 rpm
Nominal torque	32.5
Output power	130 W
Ratio	95:1

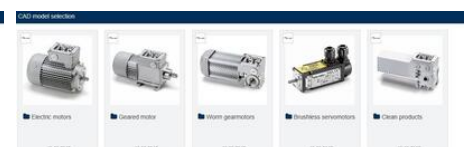


B3

Size	A	B	C	D	E	F	G	H	K	L	M	N	P	Q	R	S	U	V	W	X	Y	Max. weight (kg)		
PCEF 4T2	100	80	16	24	50	8	27	80	56	9	209	135	127	67	93	25	148	29	140	1	15	80	54	8,370
PCEF 5T2	100	80	16	24	50	8	27	80	56	9	281	135	127	67	130	25	148	29	171	1	15	80	85	13,670



Please see product description above for 2D and 3D drawings



Please see product description above for 2D and 3D drawings

