

## MINIMOTOR - PCEF WORM GEARED MOTOR WITH FURTHER PLANETARY GEAR

PCEF4T2B3-84

- For clean environments
- IP67 as standard
- Up to 90Nm rated torque
- Minimal dirt trap points
- Epoxy coated with no external fan



### PRODUCT DESCRIPTION

White epoxy coating for increased protection against chemicals and harsh working environments.  
IP67 rated with no external fan.

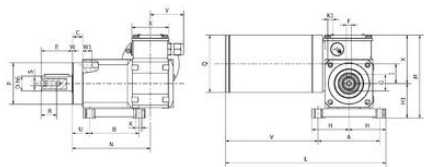
MOTOR: Asynchronous single or three phase with 2 poles, totally enclosed. Thermal safety feature. Class H winding.

GEAR UNIT: Die-cast aluminium casing in the first reduction stage, with worm screw and steel casing in the second planetary stage, with three internal planetary gears. Wheel rim in bronze 120-160 HB hardness. Hardened steel screw with ground threads rotating on ball and roller bearings. Output shaft available in stainless steel upon request.

Lubrication with special long life oil. Sealing rings made in special rubber for high temperatures. . Rated torque 90 Nm. Version B3 or B5. B5/S left version - B5/D right version.

### TECHNICAL DATA

Input voltage ac	230Δ/400Y
IP class	IP67
Nominal speed	84 rpm
Nominal torque	13.1
Output power	130 W
Rated current	0.65Δ/0.38Y
Ratio	33.25:1



B3

	A	B	C	D	E	F	G	H	M	K	L	M	N	P	Q	R	S	U	V	W	X	Y	Max. Output Power Per Pin mW	
PCF472	100	80	16	24	50	8	27	80	56	9	269	135	127	67	80	25	M8	28	149	1	15	80	54	8,270
PCF472	100	80	16	24	50	8	27	80	56	9	261	135	127	67	80	25	M8	28	171	1	15	80	85	13,670

CM model selection

Electric motor

15.06.2017

Gear motor

15.06.2017

Worm gearmotors

15.06.2017

Brushless servomotors

15.06.2017

Clean products

15.06.2017

Please see product description above for 2D and 3D drawings

Circuits

15.06.2017

CM model selection

Electric motor

15.06.2017

Gear motor

15.06.2017

Worm gearmotors

15.06.2017

Brushless servomotors

15.06.2017

Clean products

15.06.2017

Please see product description above for 2D and 3D drawings

Circuits

15.06.2017