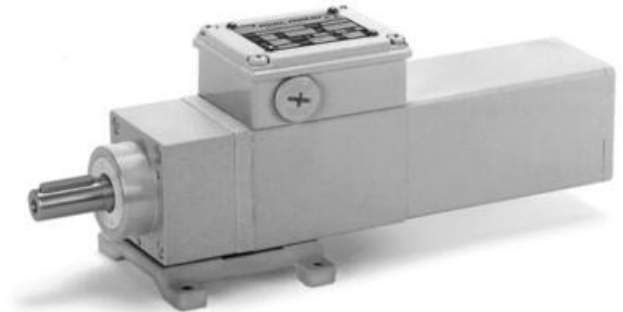


## MINIMOTOR - ACEF COAXIAL GEAR MOTORS WITH FURTHER PLANETARY GEAR

ACEF2T2B5-1.6

- For clean environments
- IP67 as standard
- Up to 23.5Nm rated torque
- Minimal dirt trap points
- Epoxy coated with no external fan



### PRODUCT DESCRIPTION

#### COAXIAL AND PLANETARY GEARED MOTOR

White epoxy coating for increased protection against chemicals and harsh working environments.  
IP67 rated with no external fan.

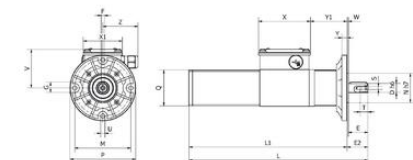
MOTOR: Asynchronous three-phase motor with 2 poles, totally Class H winding in accordance with CEI EN 60034-1.

GEAR UNIT: With casing in die-cast aluminium. Case-hardened and hardened bearings, output shaft in stainless steel on request. Lubrication with long-lasting oil (not toxic).

15 gear ratios (i) available, from 37 to 2209.5. Rated torque from 3.9 to 23.5 Nm. Version B3 or B5.

### TECHNICAL DATA

Input voltage ac	230Δ/400Y
IP class	IP67
Nominal speed	1.6 rpm
Nominal torque	23.5
Output power	31 W
Rated current	0.30Δ/0.17Y
Ratio	1687,5:1



B5

Type Type Type Type	D	E	E2	F	G	L	L1	M	N	P	Q	S	T	U	V	X	X1	Y	Y1	W	Z	Peso Bought Goods Pounds Peso
ACEF2T2	14	30	32	5	16	274	242	86	45	100	55	M5	12	6.5	60	80	60	8	57	2	56	3.24



