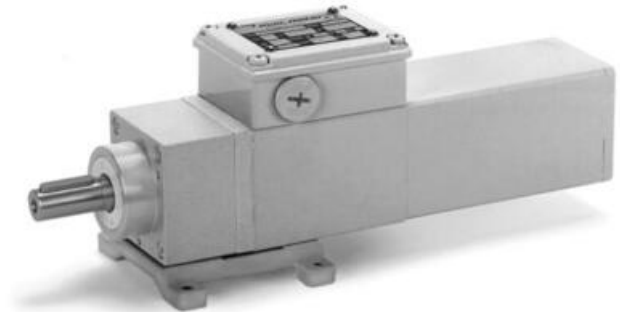


## MINIMOTOR - ACEF COAXIAL GEAR MOTORS WITH FURTHER PLANETARY GEAR

ACEF2T2B5-9.5

- For clean environments
- IP67 as standard
- Up to 23.5Nm rated torque
- Minimal dirt trap points
- Epoxy coated with no external fan



### PRODUCT DESCRIPTION

#### COAXIAL AND PLANETARY GEARED MOTOR

White epoxy coating for increased protection against chemicals and harsh working environments.  
IP67 rated with no external fan.

MOTOR: Asynchronous three-phase motor with 2 poles, totally Class H winding in accordance with CEI EN 60034-1.

GEAR UNIT: With casing in die-cast aluminium. Case-hardened and hardened bearings, output shaft in stainless steel on request. Lubrication with long-lasting oil (not toxic).

15 gear ratios (i) available, from 37 to 2209.5. Rated torque from 3.9 to 23.5 Nm. Version B3 or B5.

### TECHNICAL DATA

Input voltage ac	230Δ/400Y
IP class	IP67
Nominal speed	9.5 rpm
Nominal torque	23.5
Output power	31 W
Rated current	0.30Δ/0.17Y
Ratio	293:1

The image shows a technical drawing of a motor, model ACEF2T2. It includes a front view on the left and a side view on the right. The front view shows a circular motor body with a central shaft. Dimensions labeled include: F (total height), Z (height to top of mounting bracket), X1 (width of mounting bracket), X (width of motor body), Y1 (height of mounting bracket), W (width of mounting bracket), V (height of motor body), U1 (height of mounting bracket), M (width of motor body), and P (total width). The side view shows the motor body with dimensions: O (height of motor body), L (length of motor body), X (width of motor body), Y1 (height of mounting bracket), W (width of mounting bracket), V (height of motor body), U1 (height of mounting bracket), M (width of motor body), and P (total width). The motor body is labeled with 'ACEF2T2' and '14 30 32 5 16 274 242 86 45 100 55 M5 12 6.5 60 80 60 8 57 2 56 3.24'.

## B5

Model	D	E	F	G	L	M	N	P	Q	S	T	U	V	X	X1	Y	Y1	W	Z	Price Motor with Mounting Bracket		
ACEF2T2	14	30	32	5	16	274	242	86	45	100	55	M5	12	6.5	60	80	60	8	57	2	56	3.24

Please see product description above for 2D and 3D drawings



