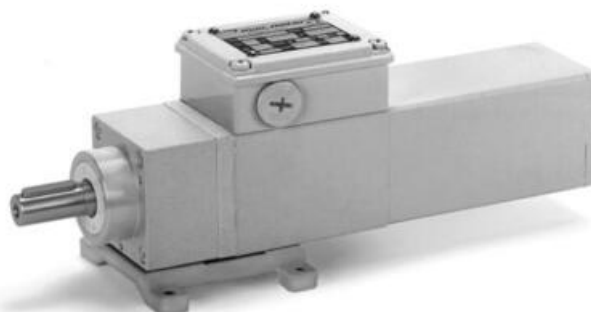


## MINIMOTOR - ACEF COAXIAL GEAR MOTORS WITH FURTHER PLANETARY GEAR

ACEF2T2B3-75

- For clean environments
- IP67 as standard
- Up to 23.5Nm rated torque
- Minimal dirt trap points
- Epoxy coated with no external fan



### PRODUCT DESCRIPTION

COAXIAL AND PLANETARY GEARED MOTOR

White epoxy coating for increased protection against chemicals and harsh working environments.  
IP67 rated with no external fan.

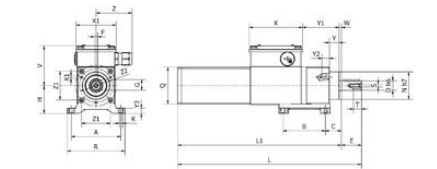
MOTOR: Asynchronous three-phase motor with 2 poles, totally Class H winding in accordance with CEI EN 60034-1.

GEAR UNIT: With casing in die-cast aluminium. Case-hardened and hardened bearings, output shaft in stainless steel on request. Lubrication with long-lasting oil (not toxic).

15 gear ratios (i) available, from 37 to 2209.5. Rated torque from 3.9 to 23.5 Nm. Version B3 or B5.

### TECHNICAL DATA

Input voltage ac	230Δ/400Y
IP class	IP67
Nominal speed	75 rpm
Nominal torque	3.9
Output power	31 W
Rated current	0.30Δ/0.17Y
Ratio	37:1



B3

Type Type Type	A	B	C	D	E	F	G	H	K	K1	L	L1	N	Q	R
ACEF2T2	74	63	24	14	30	5	16	43	5,5	M4	274	264	41	55	86

Type Type Type	S	T	V	X	X1	Y	Y1	Y2	Y3	W	Z	Z1	Z2	Pos. Weight Capacity kg
ACEF2T2	M5	12	60	80	60	14,5	55	11	8	3,5	56	43	50	3,200

CEC model selection









Please see product description above for 2D and 3D drawings

CEC model selection









Please see product description above for 2D and 3D drawings