

MINIMOTOR MCF WORM GEAR MOTOR

MCF2T2-20 B5

230/400V 3 ph 140rpm 1.8 Nm B5 mount

- For clean environments
- IP67 as standard
- Up to 6.4Nm rated torque
- Minimal dirt trap points
- Epoxy coated with no external fan



PRODUCT DESCRIPTION

WORM GEARED MOTOR

White epoxy coating for increased protection against chemicals and harsh working environments.
IP67 rated with no external fan.

MOTOR: Asynchronous three-phase motor with 2 poles, totally Class H winding in accordance with CEI EN 60034-1.

GEAR UNIT: With die-cast aluminium casing. Wheel rim in special bronze 120/160 HB hardness. Worm gear in hardened steel with thread rotating on ball and roller bearings. Output shaft in stainless steel on request

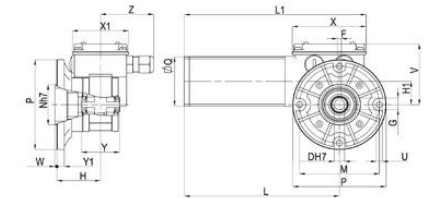
Lubrication with special long-lasting oil. Sealing rings made in special white rubber for high temperatures.
Rated torque from 0,8 to 5 Nm. Version B3 or B5. B5/S left version - B5/D right version.

The standard MCE version is also available with IP67 called MCEF

[Please click here for 2D and 3D drawings](#)

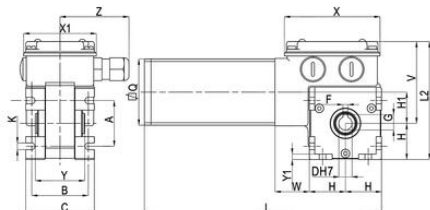
TECHNICAL DATA

Input voltage ac	230Δ/400Y
IP class	IP67
Nominal speed	140 rpm
Nominal torque	1.8
Output power	31 W
Rated current	0.30Δ/0.17Y
Ratio	20:1



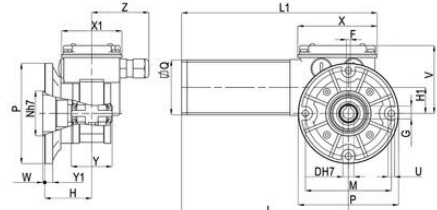
B5/S

Type	D	F	G	H	H1	L	L1	M	N	P	Q	U	V	X	X1	Y	Y1	W	Z	Z1	Weight kg
MC722	11	4	12,8	48	26	167	196	86	45	100	55	6,5	69	80	60	41	8	2	56	40	2,400



B3

Type	A	B	C	D	F	G	H	H1	K	L	L2	Q	V	X	X1	Y	Y1	W	Z	Z1	Weight kg
MC722	38	47	58	11	4	12,8	30	26	5,5	197	99	55	69	80	60	41	4,5	28	56	40	2,200



B5/S

Type	D	F	G	H	H1	L	L1	M	N	P	Q	U	V	X	X1	Y	Y1	W	Z	Z1	Weight kg
MC722	11	4	12,8	48	26	167	196	86	45	100	55	6,5	69	80	60	41	8	2	56	40	2,400

CAD model selection

Electric motors
15.06.2017

Gear motor
15.06.2017

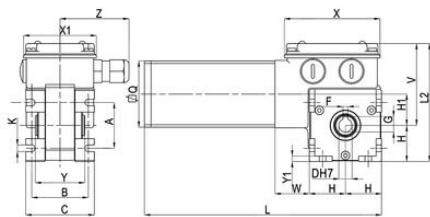
Vorn gearmotors
15.06.2017

Brushless servomotors
15.06.2017

Clean products
15.06.2017

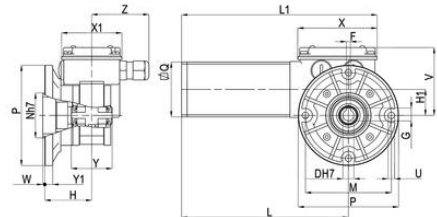
Others

Please see product description above for 2D and 3D drawings



B3

Type	A	B	C	D	F	G	H	H1	K	L	L2	Q	V	X	X1	Y	Y1	W	Z	Z1	Weight kg
MC722	38	47	58	11	4	12,8	30	26	5,5	197	99	55	69	80	60	41	4,5	28	56	40	2,200



B5/S

Type	D	F	G	H	H1	L	L1	M	N	P	Q	U	V	X	X1	Y	Y1	W	Z	Z1	Weight kg
MC722	11	4	12,8	48	26	167	196	86	45	100	55	6,5	69	80	60	41	8	2	56	40	2,400

CAD model selection

Electric motors
15.06.2017

Gear motor
15.06.2017

Vorn gearmotors
15.06.2017

Brushless servomotors
15.06.2017

Clean products
15.06.2017

Others

Please see product description above for 2D and 3D drawings