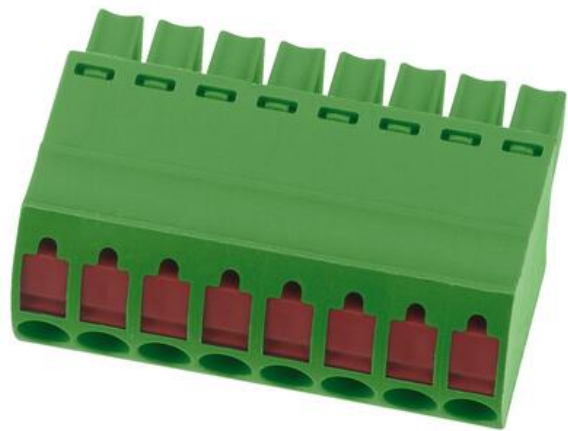


**PFB 4551/4561**

30262.1

PFB 4551/2/3,50-KD GN



## PRODUCT DESCRIPTION

**TECHNICAL DATA****GENERAL DATA**

Type	Plug-in connector
Pitch	3.5 mm
Colour	Green
Number of poles	2
Approvals	UL, cUL, VDE

**RATINGS**

Rated current	10 A
Rated voltage	160 V
Rated cross section	1.5 mm <sup>2</sup>
Rated impulse voltage	2.5 kV
Overvoltage category	III
Contamination degree	3

**DIMENSIONS**

Length	11.3 mm
Width	7 mm
Height	21.1 mm
Width left	1.75 mm

Width right	1.75 mm
-------------	---------

## CONNECTION DATA

Connector type/principle	Push-in
Contact version	Female connector
Connector version	Pluggable
Number of plugin rows	1
Cross section single wire from	0.14 mm <sup>2</sup>
Cross section single wire to	2.5 mm <sup>2</sup>
Cross section stranded wire from	0.14 mm <sup>2</sup>
Cross section stranded with ferrule to	1 mm <sup>2</sup>
Cross section stranded wire to	1.5 mm <sup>2</sup>
Cross section stranded with ferrule from	0.25 mm <sup>2</sup>
Rated wire cross section to (AWG)	16
Rated wire cross section from (AWG)	26
Stripping length	11 mm

## MATERIALS

Housing material	Polyamide 6.6
Flammability class	UL94-V0
Operating temperature from	-30 °C
Operating temperature to	105 °C
Contact spring	Copper alloy
Terminal spring	Stainless steel

## APPROVALS

UL test standard	UL 1059
Rated voltage UL	300 V
Rated current UL	10 A
cUL test standard	CSA 22.2 No.158
Rated voltage cUL	300 V
Rated current cUL	10 A
VDE test standard	DIN EN 61984
Rated voltage VDE	160 V
Rated current VDE	10 A

Plug-in cycles acc. to standard	100
Tariff code	85366990
Pack size	50
Weight	1.41 g
Angle of wire connection/contact	0°/180° (horizontal)
Connection cycles acc. to standard	5
Country of origin	QU
Current creepage resistance	CTI 600
Glow wire flammability index (GWFI)	GWFI 850
Glow wire ignition temperature (GWIT)	GWIT 775
GWFI after-glow time	30 s
GWIT exposure time	5 s
Insulation resistance	$1 \cdot 10^{13} \Omega \times \text{cm}$

