

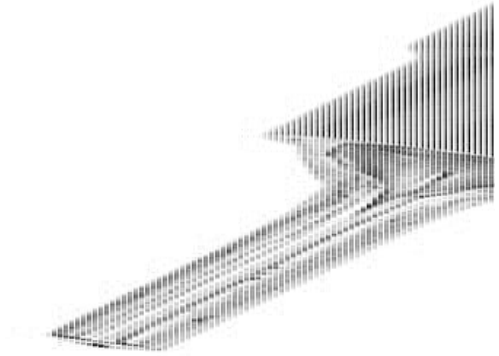
INSULATED PIN CRIMPS

SKS

2545.0

SKS 1, 1mm² Insulated pin crimp, Red

- Pin shaped acc. to DIN 46231 and similar
- Cu-ETP acc. to DIN EN13599, soldered, galv. Sn
- Wide easy entry collar PA insulation
- Continuous-use temperature range -55°C...105°C



PRODUCT DESCRIPTION

Conta-Clip offer a range of standard automotive type insulated pin crimp terminals to suit many applications.

These terminals are usually identified by the coloured collars for the various cable sizes.

The standard range covers from 0.5mm² to 6mm² cable sizes.

All types within the range have a widened cable entry, making for an easy installation.

TECHNICAL DATA

GENERAL DATA

Colour	Red
Cross section min	0.5 mm ²
Cross section max	1 mm ²
Conductor shape	Pen shape acc.DIN 46231
Rated wire cross section from (AWG)	20
Rated wire cross section to (AWG)	18

DIMENSIONS

Length	23.5 mm
Diameter of feed-in funnel	4.1 mm
DIN size	1

MATERIALS

Conductor material	Copper
Contact surface	Tinned
Soldered	Yes
Operating temperature from	-55 °C
Operating temperature to	105 °C

APPROVALS

DIN approvals	EN 13599
---------------	----------

ADDITIONAL DATA

Tariff code	85369010
Country of origin	TW
Weight	0.71 g
Pack size	100

Insulation material	Expanded PA
---------------------	-------------

